

GCC601X UC + Networking Convergence Solutions

System Firmware Release Notes

IMPORTANT UPGRADING NOTE

- [12/6/2024] [1.0.5.5 (SYS)] Due to changes in Application Filtering, users will no longer be able to downgrade to SYS 1.0.3.x or lower and PBX 1.0.25.41 or lower after upgrading to 1.0.5.5.
- [8/21/2024] [1.0.1.34(SYS)] Supported new GCC601x models and blocked firmware downgrade to any older firmware than 1.0.1.34.
- [7/26/2024] [1.0.1.32(SYS)] Changed the default value from Enable to Disable for **“Allow DHCP Option 43 and 66 to Override Server”** and **“Check/Download New Firmware at Bootup”**. Upon upgrading from older version, these two options will be disabled. Please re-enable it if needed.

Table of Content

IMPORTANT UPGRADING NOTE	1
FIRMWARE FILE DOWNLOAD	4
FIRMWARE VERSION 1.0.7.5(SYS)	5
PRODUCT NAME	5
DATE	5
FIRMWARE FILE INFORMATION	5
CHANGES/ENHANCEMENT	5
FIRMWARE VERSION 1.0.5.11(SYS)	14
PRODUCT NAME	14
DATE	14
FIRMWARE FILE INFORMATION	14
CHANGES/ENHANCEMENT	14
FIRMWARE VERSION 1.0.5.6(SYS)	15
PRODUCT NAME	15
DATE	15
FIRMWARE FILE INFORMATION	15
CHANGES/ENHANCEMENT	15
FIRMWARE VERSION 1.0.3.6(SYS)	17
PRODUCT NAME	17
DATE	17
FIRMWARE FILE INFORMATION	17
CHANGES/ENHANCEMENT	17
FIRMWARE VERSION 1.0.3.5(SYS)	18
PRODUCT NAME	18
DATE	18
FIRMWARE FILE INFORMATION	18
CHANGES/ENHANCEMENT	18
FIRMWARE VERSION 1.0.1.34(SYS)	20
PRODUCT NAME	20
DATE	20
FIRMWARE FILE INFORMATION	20

CHANGES/ENHANCEMENT	20
FIRMWARE VERSION 1.0.1.32(SYS)	21
PRODUCT NAME	21
DATE	21
FIRMWARE FILE INFORMATION	21
CHANGES/ENHANCEMENT	21
FIRMWARE VERSION 1.0.1.10(SYS)	22
PRODUCT NAME	22
DATE	22
FIRMWARE FILE INFORMATION	22
CHANGES/ENHANCEMENT	22
FIRMWARE VERSION 1.0.1.8(SYS)	23
PRODUCT NAME	23
DATE	23
FIRMWARE FILE INFORMATION	23
CHANGES/ENHANCEMENT	23

FIRMWARE FILE DOWNLOAD

Individual firmware files are available for downloading at URL below:

<https://www.grandstream.com/support/firmware>

FIRMWARE VERSION 1.0.7.5(SYS)

PRODUCT NAME

GCC6010, GCC6010W, GCC6011

DATE

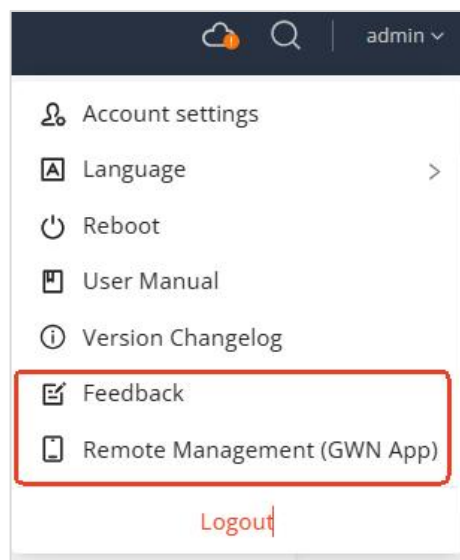
4/21/2025

FIRMWARE FILE INFORMATION

- GCC601x system firmware file name: gcc601xfw.bin
MD5 checksum: 125a3a460e8a392fde12a5e4a93c9bc9
- GCC601x complete firmware file name: gcc601xfullyfw.bin (Supported only starting from 1.0.3.5)
MD5 checksum: f807833711e7378a28c2538e20a14da2
(Including SYS 1.0.7.5 + PBX 1.0.27.44)

CHANGES/ENHANCEMENT

- **Home**
 - Added **Feedback** and **Remote Management (GWN App)** in the top bar admin dropdown menu.



- Added **Real-time Session Statistics**, **Firewall service**, and **PBX** information in **Overview**.
- Added VLAN configuration when enabling **PBX** module.
- System Settings
 - o Basic Settings
 - Fixed Asuncion time zone to UTC-3
 - Fixed Kazakhstan Almaty time zone to UTC+5
 - Added settings for multiple NTP server
 - Changed default time zone to UTC+00:00 Etc/Universal, country to Spain
 - o Security Settings
 - Added **Multi-Factor Authentication** for **Accounts Settings**

Security Settings			
Account Settings	Web Access	SSH Access	Remote Access without Password
Username	admin		
Password Modify		
Email	44li@grandstream.cn Modify		
Mobile Number	.. Modify		
Multi-Factor Authentication ⓘ	Disable Modify		
	Multi-Factor Authentication Instructions		

- Added **Allowed IP Addresses** settings in **Web Access**
 - o Schedule
 - Added a button of **Reference Details**, from which user can check to where the schedule is applied
- Maintenance
 - o Upgrade
 - Added a factory reset prompt when downgrading to an incompatible firmware
- Log & Disgnostics
 - o Added **Core Files** retrieval

- **Networking**

- **Network Settings:**

- **WAN**

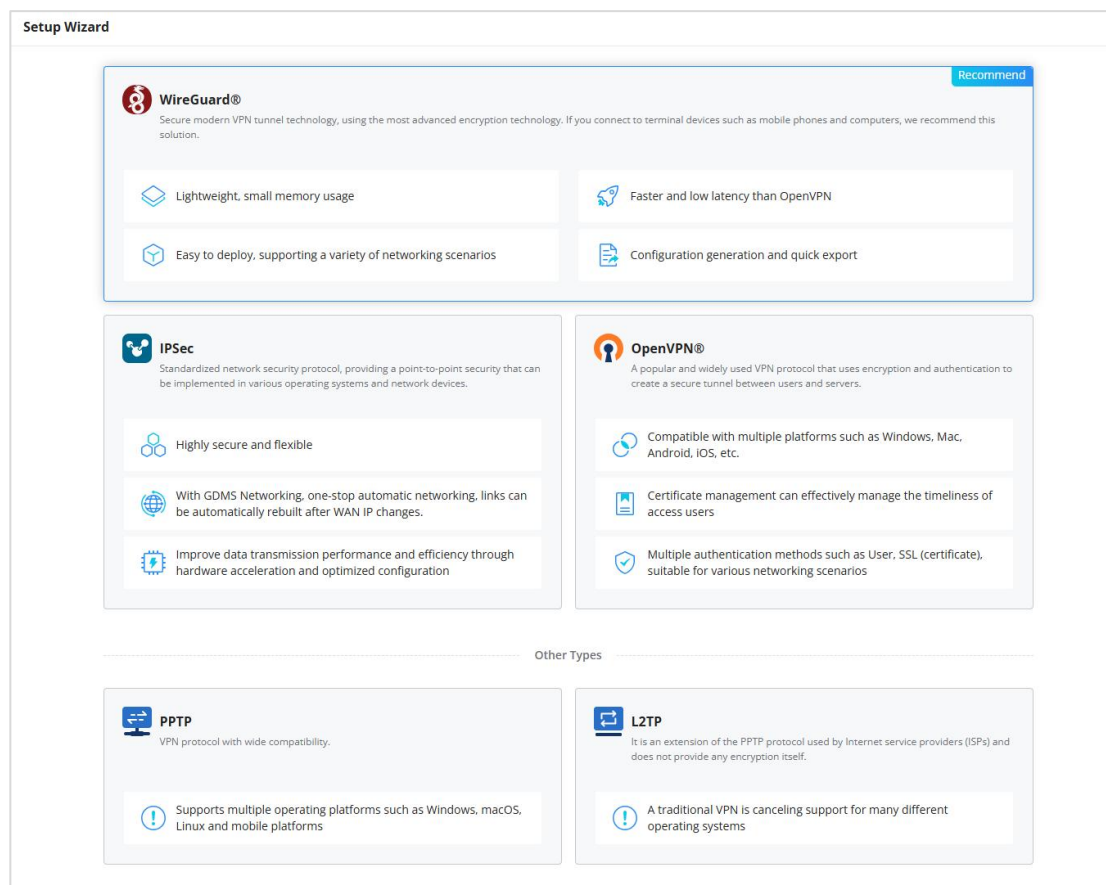
- Added **Bridge Mode**
 - Optimized the **Tracking IP** feature

- **LAN**

- Optimized the Static IP Binding settings

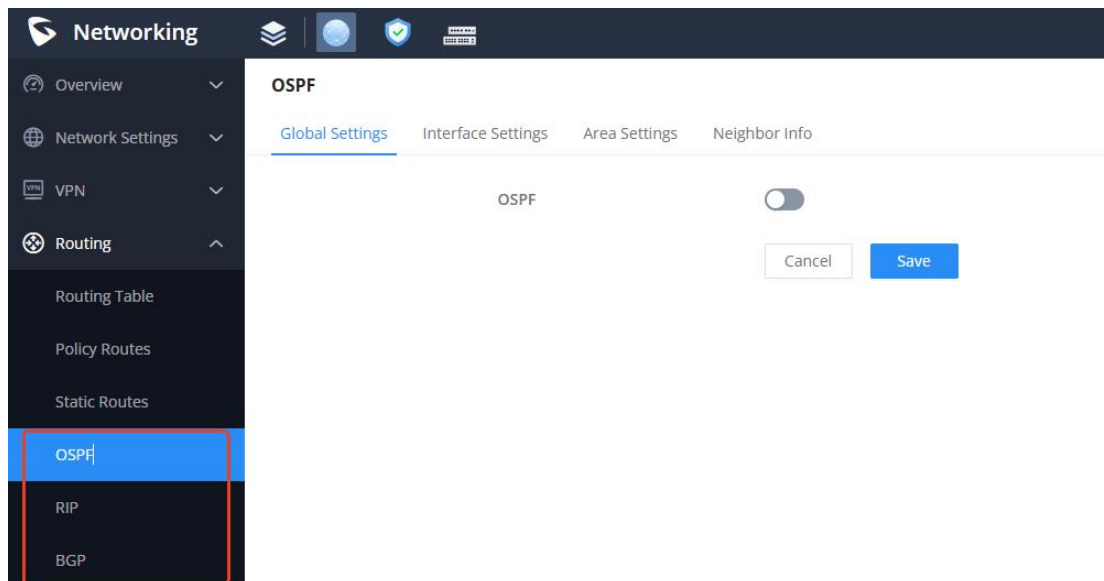
- **VPN**

- Added **Setup Wizard** for **WireGuard®**, **IPsec**, **OpenVPN®**, **PPTP** and **L2TP**



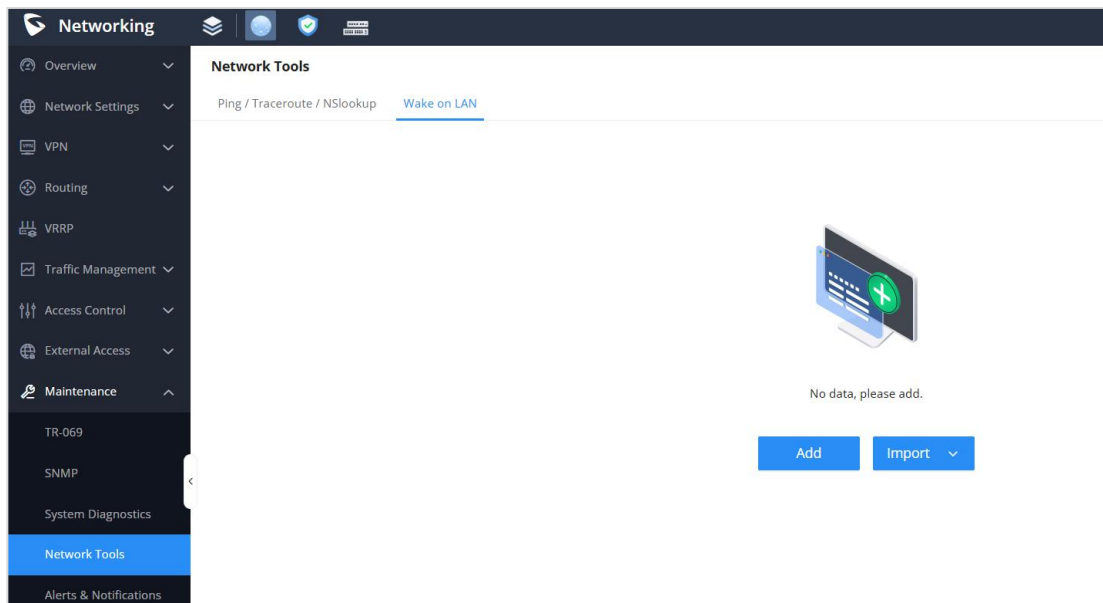
- Optimized UI configurations and added configuration guide link for **WireGuard®, IPsec**, **OpenVPN®, PPTP** and **L2TP**

- Added **Remote Clients** information list for **WireGuard®**
 - Added support of domains for the Endpoint address on **WireGuard®**.
 - Added Site-to-Site connection status to **IPsec**
 - Added column of **IP Address** and **Tunnel IP** to client list under **OpenVPN®** and **PPTP Servers**
 - Added support of **IPSec Encryption** to **L2TP** server.
 - Added support for users to manually adjust the MTU and MSS values for IPsec connections.
 - Added support of exporting client .ovpn file for **OpenVPN® Clients**
 - Optimized the logic that when a WAN interface is deleted, the dependent VPN will not be removed but set to disable instead.
- **Routing**
 - Added the **Routing Table** page
 - Optimized the UI configuration of **Static Routes** and **Policy Routes**
 - Added configuration pages for **OSPF**, **RIP**, and **BGP**

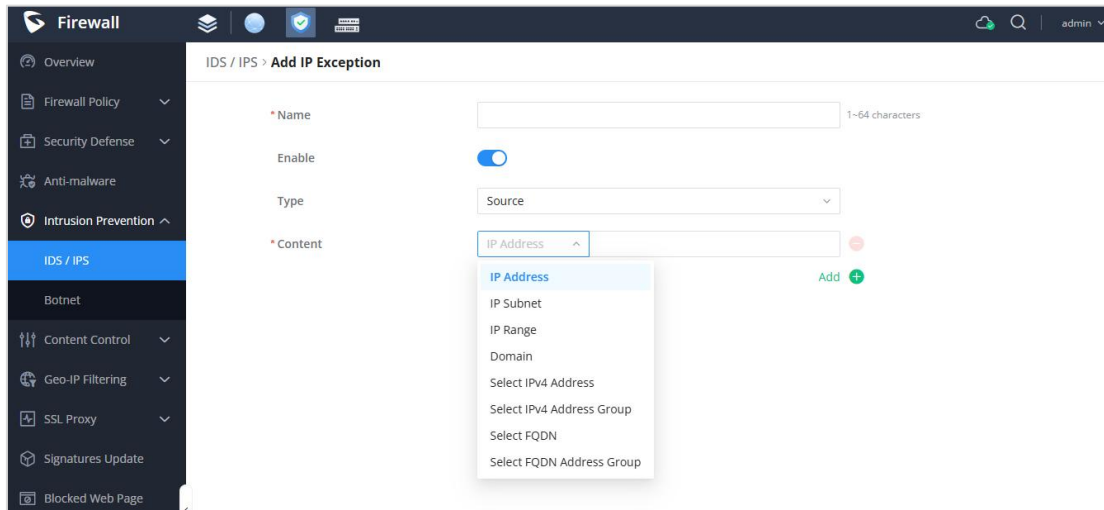


- **Traffic Management**
 - Added **Statistic by IP address** under **Traffic Statistics** → **Basic Settings**
- **External Access**
 - Added configurations of **IP Source** and **Update Interval (Min)** to **DDNS**

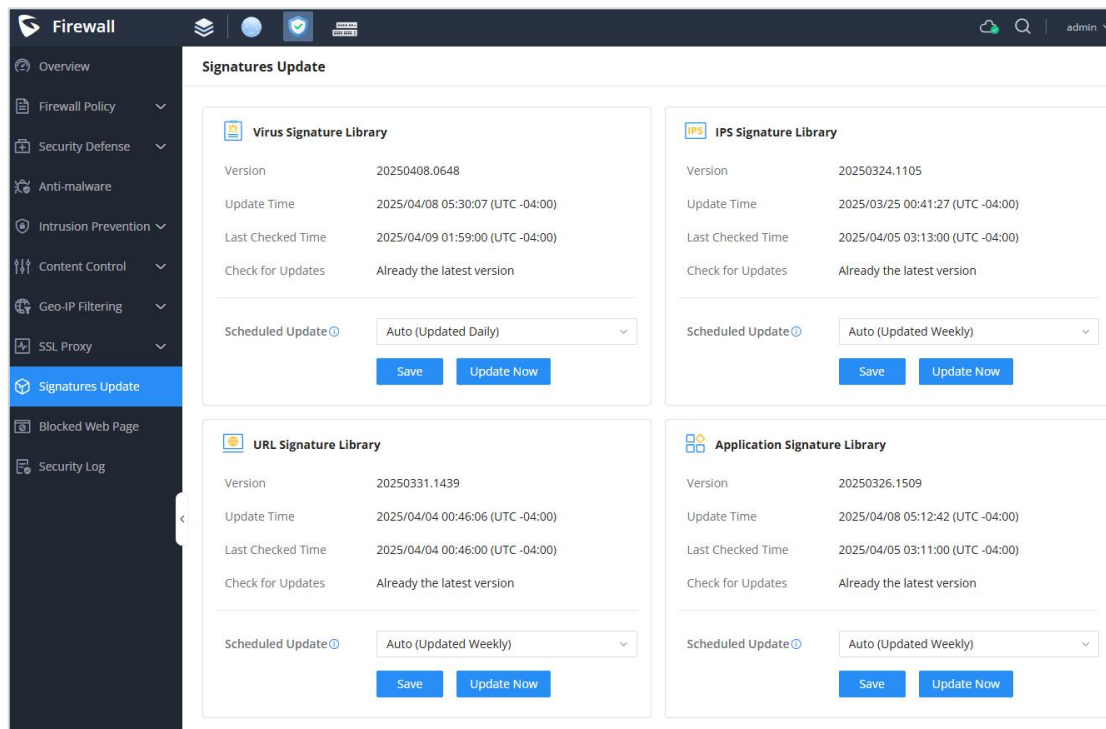
- Added the **Clone** feature to **Port Forwarding** rules
- **Maintenance**
 - Added an input restrictions to TR-069 ACS Username and Password.
 - From **System Diagnostics**, moved **Ping/Traceroute** to **Maintenance** → **Network Tools**, and **Core File** to **Home** → **Logs & Diagnosticse**
 - Added a feature of **Local Logs** download under **Syslog**
 - Added features of **NSlookup** and **Wake on LAN** under **Network Tools**



- Optimized the UI for **Alerts & Notifications** page
- **System Settings**
 - Added **Email Settings**
 - Moved **RADIUS, Certificates** to **Profiles**
- Added **Profiles**
 - Added support of **MAC Group, IP Address Group, FQDN, RADIUS, Certificates**
- **Firewall**
 - Added support of **Profiles** of **IP Address Group** and **FQDN** group to DoS Exception, IPS Exception, Bonet Exception, Content Control Exception, SSL Proxy Exception, SSL Proxy source address, Geo-IP Exception.

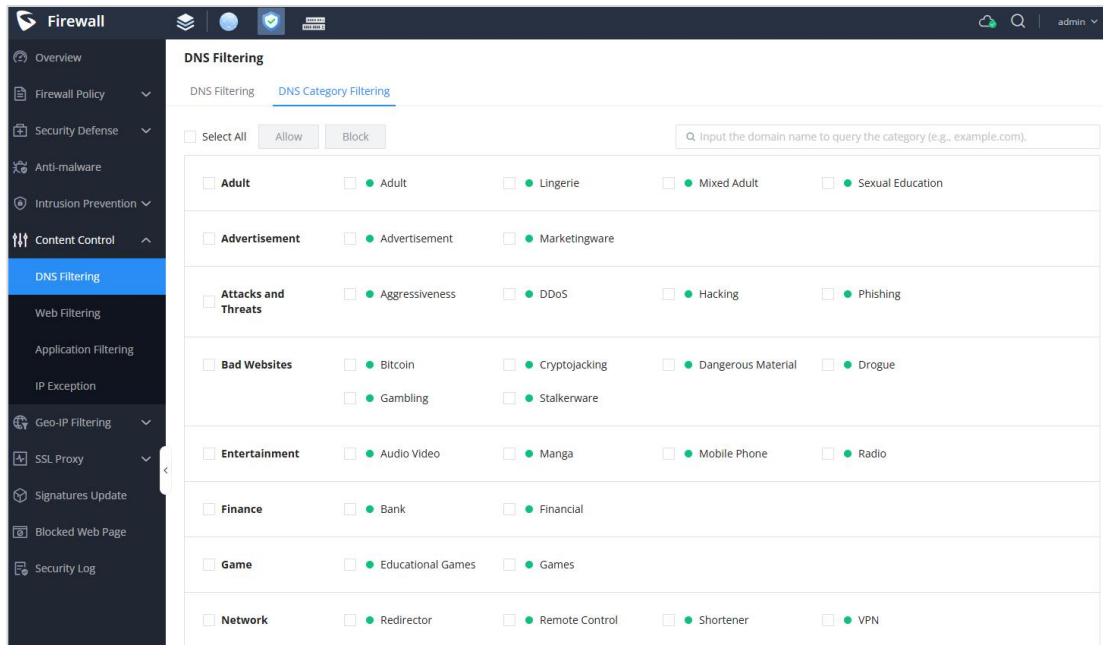


- Overview
 - o Added **App Category** for **APP Filtering** in **Top Security Log**
 - o Added **Refresh** button for **Firewall Service** plan
- Firewall Policy
 - o Added the feature of **Schedule** for **Traffic Rules**
 - o Added **Clone** button for **Traffic Rules** and Advanced NAT
- Added **Signatures Update** to manage all related Firewall module's signature libraries.

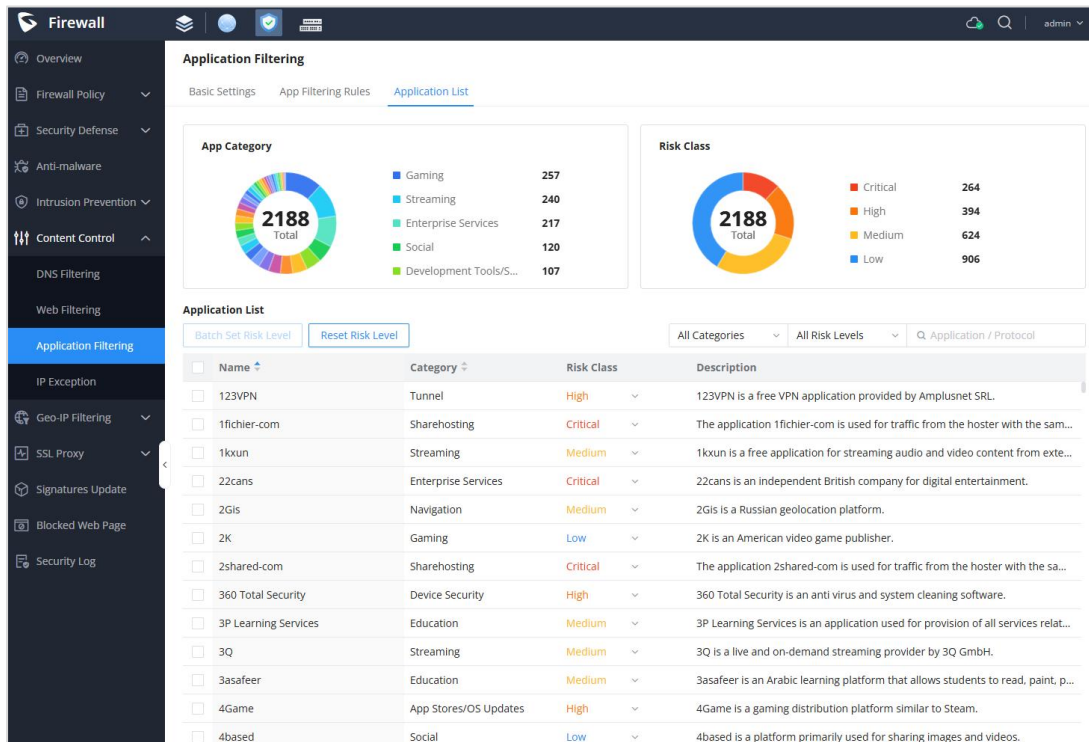


- Content Control

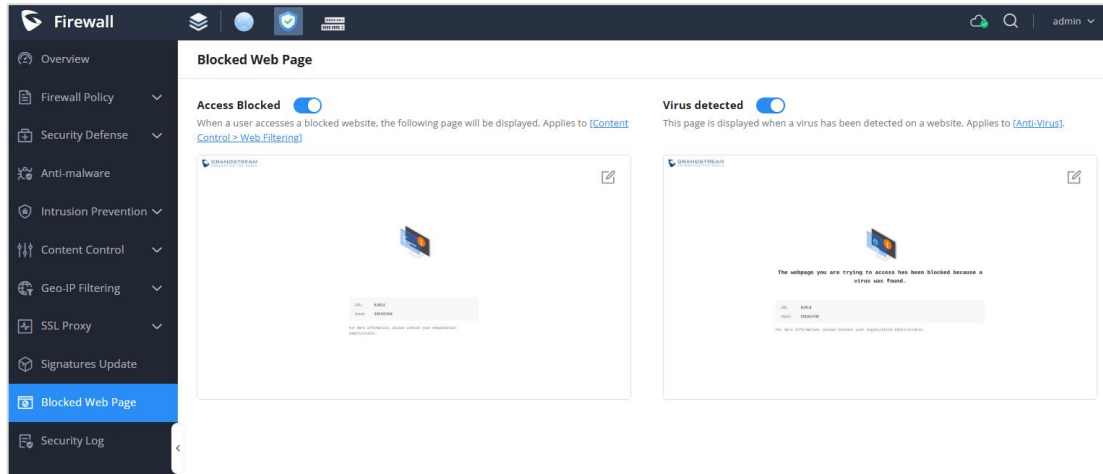
o Added **DNS Category Filtering** under **DNS Filtering**



o Optimized the **Application Filtering Rules** and **Application List** interface UI, and added **Network Protocol** and **Unknown Applications** categories



- Added **Blocked Web Page** to self-define the landing page for **Access Blocked** and **Virus detected**



- Security Log
 - o Added **Details** for **DoS & Spoofing** and **Application Filtering**
 - o Added support of **Export All** logs
 - o Added **DNS Filtering Risk Level Settings** to **Log Level** and **Email Notification**

• Network Nodes

- Added support of **VLAN ID** configuration to **Wi-Fi Management** → **PPSK**
- Added support of **Captive Portal** to wired clients
- Added **Bypass Splash Page** to **Captive Portal** → **Policy**

DNS Filtering Risk Level Settings

▲ Block

☒ Critical
 ☐ High
 ☐ Medium
 ☐ Low

Blocked DNS

☒ Critical
 ☐ High
 ☐ Medium
 ☐ Low

▲ Adult

☐ Critical
 ☐ High
 ☒ Medium
 ☐ Low

Adult

☐ Critical
 ☐ High
 ☒ Medium
 ☐ Low

Lingerie

☐ Critical
 ☐ High
 ☒ Medium
 ☐ Low

Mixed Adult

☐ Critical
 ☐ High
 ☒ Medium
 ☐ Low

Sexual Education

☐ Critical
 ☐ High
 ☒ Medium
 ☐ Low

▲ Advertisement

☐ Critical
 ☐ High
 ☐ Medium
 ☒ Low

Advertisement

☐ Critical
 ☐ High
 ☐ Medium
 ☒ Low

Marketingware

☐ Critical
 ☐ High
 ☐ Medium
 ☒ Low

▲ Attacks and Threats

☒ Critical
 ☐ High
 ☐ Medium
 ☐ Low

Aggressiveness

☒ Critical
 ☐ High
 ☐ Medium
 ☐ Low

DDoS

☒ Critical
 ☐ High
 ☐ Medium
 ☐ Low

Hacking

☒ Critical
 ☐ High
 ☐ Medium
 ☐ Low

Phishing

☒ Critical
 ☐ High
 ☐ Medium
 ☐ Low

▲ Bad Websites

☒ Critical
 ☐ High
 ☐ Medium
 ☐ Low

Bitcoin

☒ Critical
 ☐ High
 ☐ Medium
 ☐ Low

Cancel

Save

- Fixed a bug where UC endpoints could not detect VoIP devices on the WAN side.
- Fixed a bug that caused VPN configurations to be erased when the WAN connection was disabled or deleted.
- Fixed a bug that character "-" cannot be used in the special characters list for certificate names.
- Fixed a bug that Daylight Saving Time was applied in the Asuncion/Paraguay time zone.
- Fixed a bug of /31 subnet mask support.
- Fixed a bug that caused intermittent disconnections with IPSec VPN.

FIRMWARE VERSION 1.0.5.11(SYS)

PRODUCT NAME

GCC6010, GCC6010W, GCC6011

DATE

1/13/2025

FIRMWARE FILE INFORMATION

- GCC601x system firmware file name: gcc601xfw.bin
MD5 checksum: 6f06b8ba6b41fa9c7ca704b5b68fce3e
- GCC601x complete firmware file name: gcc601xfullyfw.bin (Supported only starting from 1.0.3.5)
MD5 checksum: 39c3816a7734cfd4c9aa94f1228a83cd
(Including SYS 1.0.5.11 + PBX 1.0.27.17)

CHANGES/ENHANCEMENT

- Internal bug fixes

FIRMWARE VERSION 1.0.5.6(SYS)

PRODUCT NAME

GCC6010, GCC6010W, GCC6011

DATE

12/6/2024

FIRMWARE FILE INFORMATION

- GCC601x system firmware file name: gcc601xfw.bin
MD5 checksum: 0815d1f0a1e272e6d3b6b0216aedb870
- GCC601x complete firmware file name: gcc601xfullyfw.bin (Supported only starting from 1.0.3.5)
MD5 checksum: 1b19dcb30ead367939324922dbe85d20
(Including SYS 1.0.5.6 + PBX 1.0.27.14)

CHANGES/ENHANCEMENT

- [Home] Added Operation Log page.
- [Home] Added the ability to schedule regular backups under the *Maintenance* → *Backup & Restore* page.
- [Home] Added support for MTA email method.
- [Networking] Added support for load balancing strategies under the *Routing* → *Policy Routes* page.
- [Networking] Added support for VRRP.
- [Networking] VPN settings are now retained after closing VPN.
- [Networking] DNS filtering now supports filtering by SNI and common name in the certificate.
- [Networking] IPSec is now limited to 64 tunnels.
- [Networking] Added support for connection speed test with GWN Cloud.
- [Networking] Added support for receiving PPSK configurations from GWN Cloud.
- [Firewall] Added ability to configure outbound traffic rules under the *Firewall Policy* → *Traffic Rules* page.

- [Firewall] IDS/IPS detection settings will now be applied to all WAN interfaces. Interfaces can no longer be excluded.
- [Firewall] Added support for SMTP(S) and POP3(S) detection protocols.
- [Firewall] Added support for importing and exporting SSL proxy exemption lists.
- [Firewall] Added ability to schedule the automatic turning on/off of DNS filtering, web filtering, and application filtering.
- [Firewall] Added support for Geo-IP filtering.
- [Firewall] SSL exemption list now supports wildcard input.
- [Firewall] Added security log risk levels and corresponding filters.
- [Firewall] Added *Application List* tab to the [Application Filtering] section. This page will show a list of all monitored applications and their corresponding risk levels.
- [Network Nodes] Added support for 6GHz band in the SSID, Radio, and Mesh settings.
- [UC Endpoints] Fast Provision will now also include the PBX module's local LDAP phonebook information.
- Several bug fixes.

FIRMWARE VERSION 1.0.3.6(SYS)

PRODUCT NAME

GCC6010, GCC6010W, GCC6011

DATE

10/8/2024

FIRMWARE FILE INFORMATION

- GCC601x system firmware file name: gcc601xfw.bin
MD5 checksum: 25957d6a84dd13b2976c6d08ae386221
- GCC601x complete firmware file name: gcc601xfullyfw.bin (Supported only starting from 1.0.3.5)
MD5 checksum: dd0e37ef081abf11ea56151029724fc0
(Including SYS 1.0.3.6 + PBX 1.0.25.41)

CHANGES/ENHANCEMENT

- [Home] Fixed an issue that offline device disappears from Network Topology
- [Networking] Fixed an issue that on GCC6010 SFP1 only supports maximum 1G bandwidth. Now it opens to 2.5G.
- Internal bug fixes.

FIRMWARE VERSION 1.0.3.5(SYS)

PRODUCT NAME

GCC6010, GCC6010W, GCC6011

DATE

9/20/2024

FIRMWARE FILE INFORMATION

- GCC601x system firmware file name: gcc601xfw.bin
MD5 checksum: bbcd081cb648443fd7e9cac33e5ff333
- GCC601x complete firmware file name: gcc601xfullyfw.bin (Supported only starting from 1.0.3.5)
MD5 checksum: 89d6b124242b06bf2e82790b5929a0fc
(Including SYS 1.0.3.5 + PBX 1.0.25.40)

CHANGES/ENHANCEMENT

- [Home] Added support for formatting M.2 SSD
- [Home] Added support of **Real-time Session Statistics** in Overview page
- [Home] Added support of **Show Offline Device** in Topology page
- [Home] Added configuration of **Redirect from Port 80** in System Settings → Security Settings → Web Access
- [Home] Added support of complete firmware upgrade to upgrade both System and PBX firmware by one .bin file
- [Home] Fixed the bug that prompts “internal error” when performing “Detect New Version” in firmware Upgrade
- [Networking] Allowed same VLAN ID configuration on different WANs
- [Networking] Changed IPv6 MTU minimum value to 1280
- [Networking] Added **WAN Port MAC address** configuration

- [Networking] Added **Blackhole** option for Static Routes → Outgoing Interface
- [Networking] Added **PBX Service** configurations for Traffic Management → QoS → VoIP Settings
- [Networking] Added support of batch delete to Maintenance → System Diagnostics → Core File
- [Networking] Added support of saving capture on attached storage under Maintenance → System Diagnostics → Capture
- [Networking] Added **Takeover / Un-Takeover Switch Alert** option into Maintenance → Alerts & Notifications → E-mail Notification Settings
- [Networking] Fixed the bug that WAN related configurations are deleted when disabling WAN
- [Networking] Enforced minimum 1 LAN port when disabling Port under Network Settings → Port Configuration
- [Networking] Supported exporting pem format certificate in System Settings → Certificates
- [Firewall] Added support of **Static ARP List** under Security Defense → ARP Protection
- [Firewall] Moved Spoofing Defense from DoS Defense to ARP Protection
- [Firewall] Added support of **IP Exception** to Content Control
- [Firewall] Added search feature in Content Control → Application Filtering → App Filtering Rules
- [Firewall] UI optimization
- Internal bug fixes.

FIRMWARE VERSION 1.0.1.34(SYS)

PRODUCT NAME

GCC6010, GCC6010W, GCC6011

DATE

8/21/2024

FIRMWARE FILE INFORMATION

- GCC601x system firmware file name: gcc601xfw.bin
MD5 checksum: 2736f9bd5a51e24e53857546887a22ec

CHANGES/ENHANCEMENT

- Added support of new models, GCC6010W, GCC6011
- Blocked system firmware downgrade to any older version
- Internal bug fixes.

FIRMWARE VERSION 1.0.1.32(SYS)

PRODUCT NAME

GCC6010

DATE

7/26/2024

FIRMWARE FILE INFORMATION

- GCC6010 system firmware file name: gcc601xfw.bin
MD5 checksum: 3b6810c23b4ee941c534649ef84d41ea

CHANGES/ENHANCEMENT

- Resolved the Tiktok Live streaming issue when Antivirus is enabled.
- Changed the default value from Enable to Disable for “**Allow DHCP Option 43 and 66 to Override Server**” and “**Check/Download New Firmware at Bootup**”. Upon upgrade from older version, these two options will be disabled, please re-enable it if needed.
- Changed the default value from 10sec to 300sec for all **Flood Attack Defense** timeout settings.
- Changed the default action to **Drop** for WAN **Inbound Rules** under **Firewall Policy**.
- Updated the DPI library, latest library is not compatible with SYS version lower than 1.0.1.32.
- Updated the IPS, URL, and Antivirus signature library.
- Internal bug fixes.

FIRMWARE VERSION 1.0.1.10(SYS)

PRODUCT NAME

GCC6010

DATE

6/28/2024

FIRMWARE FILE INFORMATION

- GCC6010 system firmware file name: gcc601xfw.bin
MD5 checksum: c3b812966176a904282000ab622f3011

CHANGES/ENHANCEMENT

- Disable **Check/Download New Firmware at Bootup** by default.
- Internal bug fixes.

FIRMWARE VERSION 1.0.1.8(SYS)

PRODUCT NAME

GCC6010

DATE

6/4/2024

FIRMWARE FILE INFORMATION

- GCC6010 system firmware file name: gcc601xfw.bin
MD5 checksum: 0294ea7965254b2e99d10a5399bfd05b

CHANGES/ENHANCEMENT

- This is the initial release of GCC6010 system firmware.