



ALMOUT1 (COM1) OPEN DOOR2

=====

OPEN DOOR CONTROL:

- ALMOUT2 (COM2) → DOOR1 (By Default)
 - ALMOUT1 (COM1) → DOOR2 (By Selection)
- =====

ALMOUT1 (COM1) OPEN DOOR2:

Mutual-exclusive feature, only work when chosen at ALMOUT1

- Data source: GDS37XX or Weigand Input
- RFID configure: User Configuration under Card Management, could be set to Open Door1 or Door2 or Both.
- Mixed Data Source and RFID Configure:

Hardware Interface:

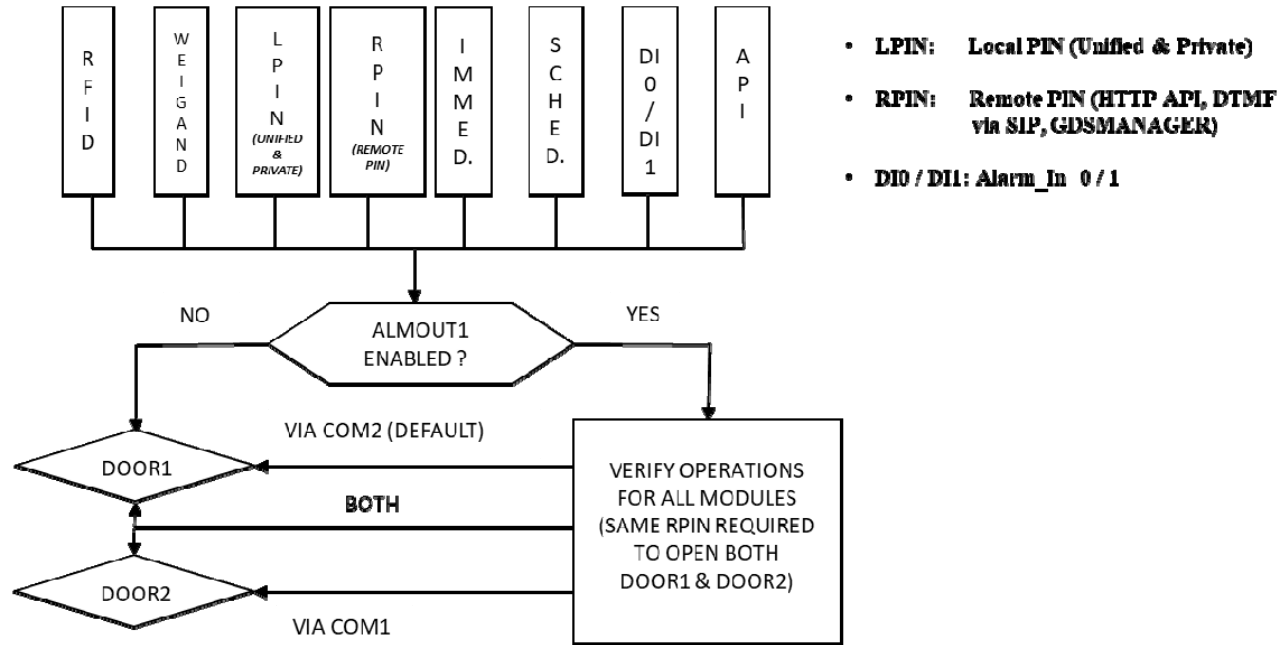
Default COM2 control:	Door1	(Default)
ALMOUT1 (COM1) control:	Door2	(Selectable)

Data Source:

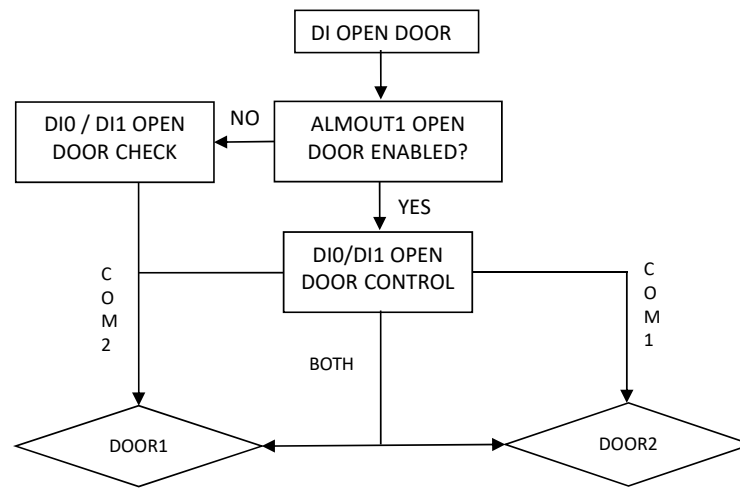
GDS37xx or Weigand Input:	RFID Card, PIN
---------------------------	----------------

Controls of Door1 and/or Door2:

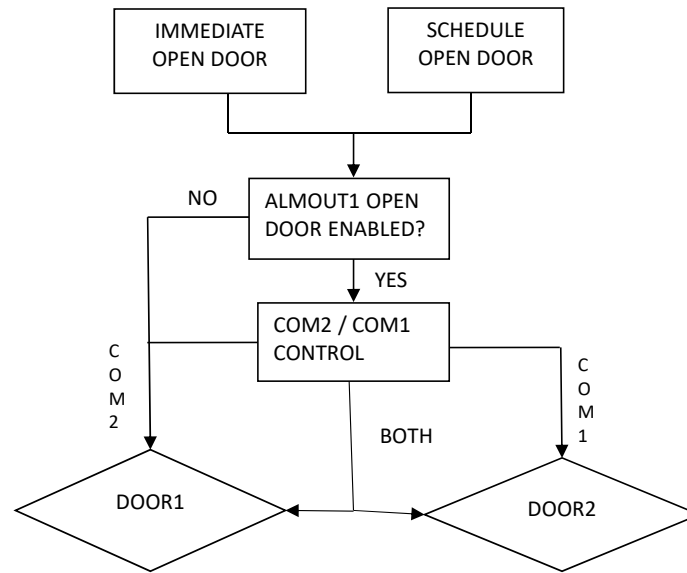
1. Immediately Open
2. Schedule Open
3. Remote Open
 - a. SIP Call (e.g.: One Key Open Door)
 - b. DTMF Open Door
4. HTTP API Open Door (2nd stage development by system integrators)
5. Alarm In1/2 (DI0/DI1) control COM2/COM1 (Door1/Door2) (via 3rd party sensor or input device)
6. Log will display which door opened by whom



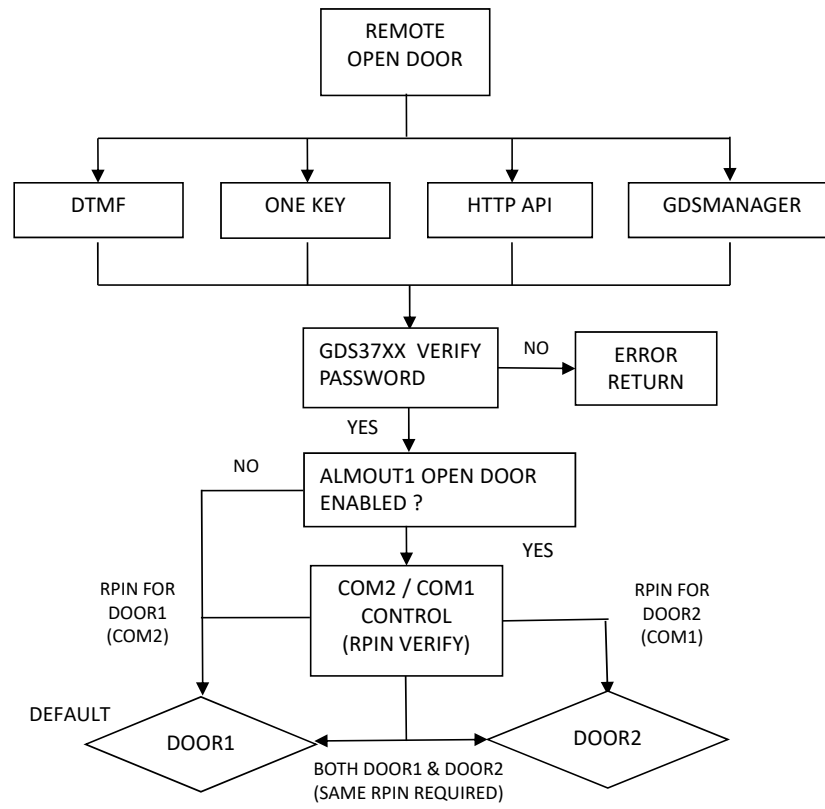
ALMOUT1 (COM1) OPEN DOOR LOGIC



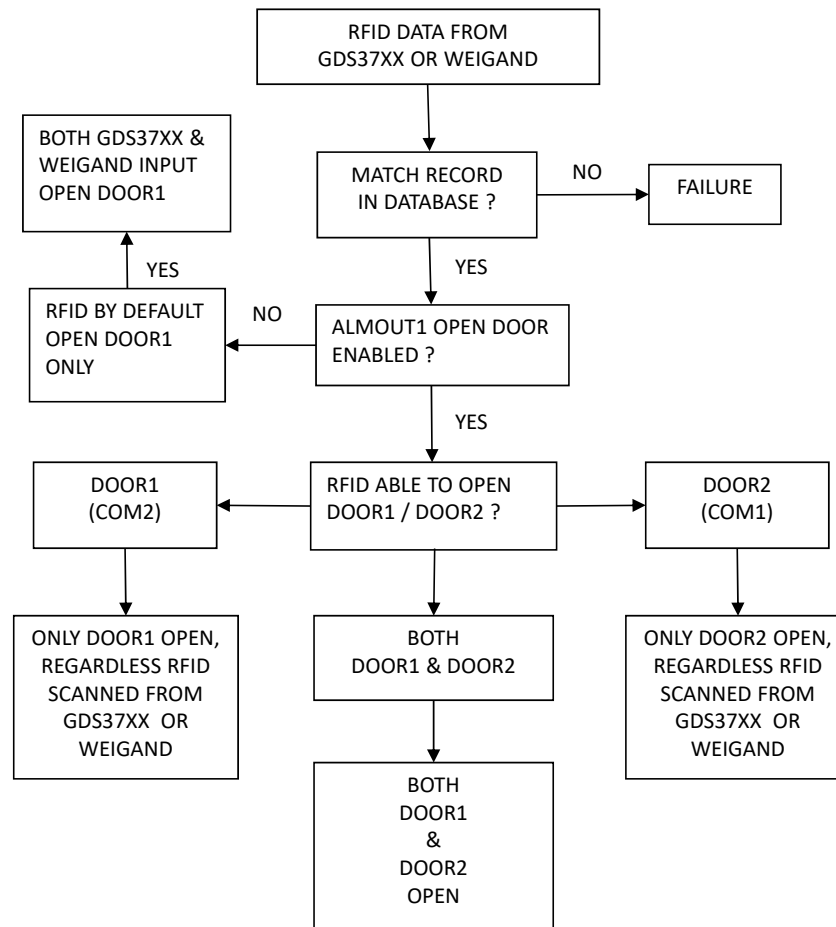
DI OPEN DOOR LOGIC



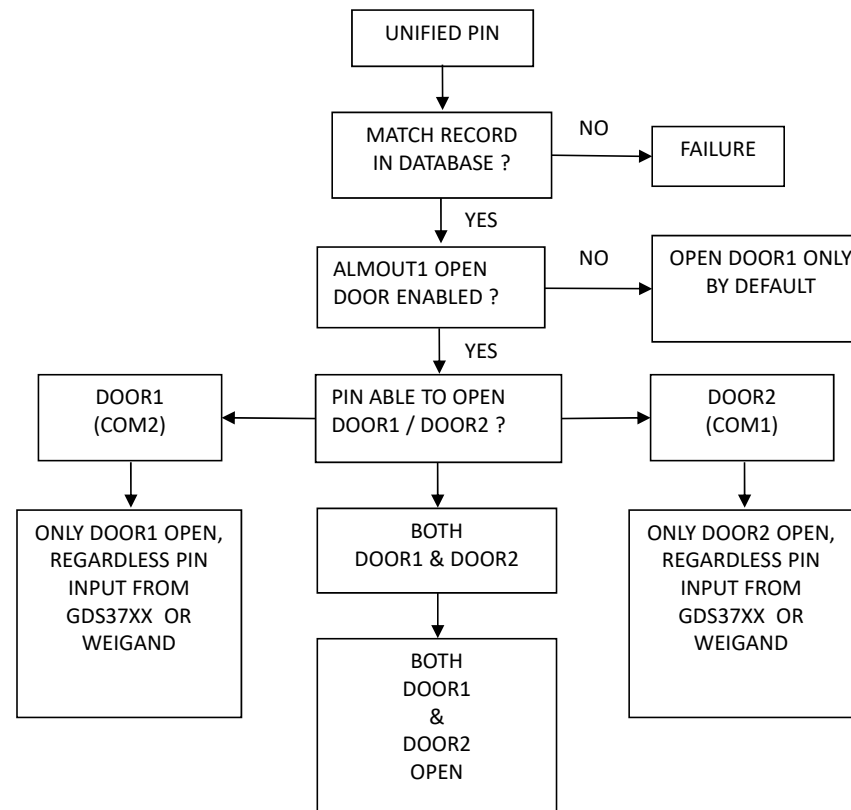
IMMEDIATE/SCHEDULE OPEN DOOR LOGIC



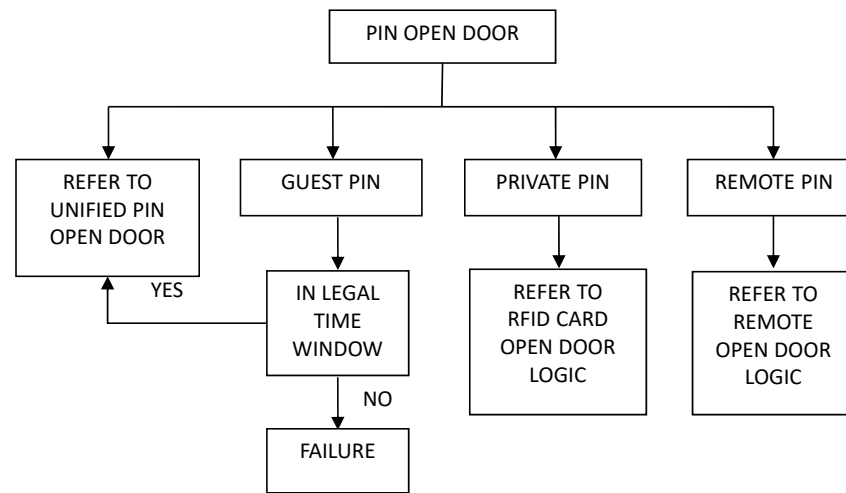
REMOTE OPEN DOOR LOGIC



RFID CARD OPEN DOOR LOGIC



UNIFIED PIN OPEN DOOR LOGIC



PIN OPEN DOOR LOGIC