

DP750/DP720 Firmware Release Note

IMPORTANT UPGRADING NOTE

- For DP750/DP720, once upgraded to 1.0.3.23 or above, downgrading to 1.0.3.17 firmware version or lower is not supported.
- For DP750/DP720, once upgraded to 1.0.3.17 or above, downgrading to 1.0.2.16 firmware version or lower is not supported.
- For DP750/DP720, once upgraded to 1.0.2.16 or above, downgrading to 1.0.1.x firmware version or lower is not supported.
- For DP750/DP720, firmware 1.0.0.99 (The first public released beta firmware) and all above can upgrade to 1.0.3.23 directly, no transitional firmware is needed.

Table of Content

IMPORTANT UPGRADING NOTE	1
---------------------------------------	----------

FIRMWARE VERSION 1.0.3.23	3
--	----------

PRODUCT NAME.....	3
DATE	3
IMPORTANT UPGRADING NOTE	3
ENHANCEMENT	3
BUG FIX	4
NEW FEATURES OVERVIEW	5
<i>CORE COLLECTION EMAIL</i>	<i>5</i>
<i>DP720 FACTORY RESET DURING BOOTING UP</i>	<i>6</i>
<i>HANDSET PROVISIONING FEATURE</i>	<i>7</i>
<i>DP750 DEBUG TOOLS.....</i>	<i>9</i>
<i>REPEATER MANAGEMENT PAGE.....</i>	<i>11</i>
<i>BACKUP CONFIGURATION.....</i>	<i>12</i>
<i>UPNP DISCOVERY.....</i>	<i>13</i>
<i>ICON BAR WITH SHORTCUT ICON BUTTON</i>	<i>14</i>
<i>CUSTOMIZE DP720 RINGTONES.....</i>	<i>15</i>
<i>ENHANCED FACTORY RESET.....</i>	<i>16</i>
<i>RENAME THE PROFILE.....</i>	<i>17</i>
<i>SEND SIP INFO AND RFC2833 AT SAME TIME</i>	<i>18</i>

FIRMWARE VERSION 1.0.2.16	20
--	-----------

PRODUCT NAME.....	20
DATE	20
IMPORTANT UPGRADING NOTE	20
ENHANCEMENT	20
BUG FIX	20
NEW FEATURES OVERVIEW	24
<i>ACCESS CONTROL LIST.....</i>	<i>24</i>
<i>ENABLE/DISABLE TR-069</i>	<i>24</i>
<i>CORE DUMP LIST STATUS.....</i>	<i>25</i>
<i>HTTPS WEB ACCESS</i>	<i>25</i>
<i>INITIAL SUPPORT FOR REPEATER</i>	<i>26</i>
<i>DOCUMENTS ADDED TO SUPPORT PAGE.....</i>	<i>28</i>
<i>LANGUAGES UPDATED</i>	<i>28</i>

FIRMWARE VERSION 1.0.3.23

PRODUCT NAME

DP750 and DP720

DATE

03/14/2017

IMPORTANT UPGRADING NOTE

- For DP750/DP720, once upgraded to 1.0.3.23 or above, downgrading to 1.0.3.17 firmware version or lower is not supported.
- For DP750/DP720, once upgraded to 1.0.3.17 or above, downgrading to 1.0.2.16 firmware version or lower is not supported.
- For DP750/DP720, once upgraded to 1.0.2.16 or above, downgrading to 1.0.1.x firmware version or lower is not supported.
- For DP750/DP720, firmware 1.0.0.99 (The first public released beta firmware) and all above can upgrade to 1.0.3.23 directly, no transitional firmware needed.

ENHANCEMENT

- Improved maximum concurrent calls from 4 wide-band calls to 5.
- Added Email address to core debug page. [CORE COLLECTION EMAIL]
- Added DP720 factory reset combo key to be able to recover the device during booting up. [DP720 FACTORY RESET DURING BOOTING UP]
- Implemented Handset Provisioning feature. Add warning information to SIP Account Settings and Line Settings Pages if Handset Provisioning enabled. [HANDSET PROVISIONING FEATURE]
- Implemented DP750 Debug Tools that allow generate and submit debug files to Grandstream debug server directly. Add handset notification for base core dump files. [DP750 DEBUG TOOLS]
- Added web UI support to DP750 for repeater management such as display/link/unlink, etc. [REPEATER MANAGEMENT PAGE]
- Removed Tools/alarm menu from DP720 GUI, replaced by Status menu.
- Added keypad tones for non DTMF keys on DP720.
- Added subscribe soft key in idle screen if HS no subscribed on DP720
- Added backup configuration feature. [BACKUP CONFIGURATION]
- Added UPnP discovery feature. [UPNP DISCOVERY]
- Added support for more languages and updated translation.
- Added DP750/DP720 product resource link to DP750 web UI footer at left side.
- Added support for page refresh by Refresh Page button, and added the icons of Refresh Page, Open Subscription and Page All button to icon bar. [ICON BAR WITH SHORTCUT ICON BUTTON]
- Added the ability to customize DP720 ringtones. [CUSTOMIZE DP720 RINGTONES]

- Enhanced factory reset feature by adding options to select Full RESET, RESET without deleting handsets subscription or RESET only deleting handset subscription. [ENHANCED FACTORY RESET]
- Added capability to rename the profile. [RENAME THE PROFILE]
- Added support for Distinctive Ringtone based on a customized SIP Alert-info header
- Added support to upload TXT configuration file, now user can upload TXT configuration file as the same as XML configuration files.
- Added support to auto-refresh on dect status web UI
- Added a new tab named "Support" under Maintenance page for support document, configuration support and debug tools.
- Added DP720 walk through setup wizard after factory reset.
- Added DP750 the ability to send SIP INFO and RFC2833 at same time. [SEND SIP INFO AND RFC2833 AT SAME TIME]
- Added force reboot button to web UI to force reboot DP750 in factory reset page under maintenance section.
- Improved power savings and stability.

BUG FIX

- Fixed DP720 did not play busy tone in speaker when handset is in speaker mode
- Fixed DP750 UPnP only able to display one DP device at the same time
- Fixed DP750 IP call cannot be redialed
- Removed "Disable Call Waiting Tone" from Profile page, the settings are now under DECT -> Handset Settings now
- Fixed DP750 Music on hold is not sending correct signal for resume
- Fixed DP750: Self-defined time zone field length is too short, increased it from 32 characters to 64
- Fixed DP750 SIP Registration before expiration field value limit is too small, increased it to 64800
- Fixed DP750 SIP Registration failure retry sending duplicated REGISTER packets
- Fixed DP750 cannot unsubscribe the handset after factory reset via TR069
- Fixed DP750 could not make outbound call after handset stay in the off-hook status more than two minutes
- Removed UCM Zero Config template offline download from DP750 web GUI, because DP has official released and the template now can be accessed directly on UCM
- Fixed DP750 cannot factory reset when reset device by TR069
- Fixed DP750 "support tools" online support links are open in self-page and removed offline user manual
- Fixed DP750 Change web port did not tip reboot
- Fixed DP720 contacts cannot display all after browse more than 10 entries
- Fixed DP720 key mapping settings does not working properly
- Fixed DP720 reboot automatically when receiving a call at the same time of successfully saving a new contact
- Fixed DP720 LSK/RSK becomes invalid in Settings menu after fast repeat enter and exit User Settings
- Fixed DP720 ring5 cannot be save and apply to melody

- Fixed DP720 cannot access to submenu or back to idle when unsubscribe it during in the call history interface
- Fixed DP720 did not play busy tone in speaker when handset is in speaker mode
- Fixed DP720 keypad tone is very small
- Fixed HS prompt "Unknown User" when it is not subscribed and pressing keypad from main interface, update the prompt to "Not subscribed"
- Fixed "Check for New Firmware" button does not prompt "the operation successfully" after being clicked
- Fixed handset will lose connection after conference member end the call sometimes
- Fixed when set the SRTP Mode to "enabled and forced", after answering the second calls, the status of handset will become abnormal
- Fixed handset to prompt "Current account was disabled" instead of "User unknown" when calling using disabled account
- Fixed VLAN settings sometimes does not working properly issue
- Fixed incoming account misrepresented in Circular/Parallel/Shared hunt mode
- Fixed "Disable Call Waiting Caller ID" option does not working
- Fixed reject incoming call from single handset will terminates the call instead of advancing to the next handset in circular/linear mode
- Fixed DP750 is providing incorrect Line status to ACS server
- Fixed the confirmation tone is not played by speaker
- Fixed DP750 inactive SIP accounts triggers No Registration LED
- Fixed the System Info page does not refresh after clicking Check Firmware button
- Changed the "Upgrade" button to "Check for New Firmware" and added firmware version information after the button being pressed
- Fixed after changed IP, user could not access web UI
- Fixed that DP750 can reboot when DP720 is upgrading
- Fixed the value cannot be saved if typing Return key on White/Black list for WAN side
- Fixed account info mismatch when in Parallel or Shared mode
- Fixed DP750 doesn't accept dial plan that works fine on GXP
- Fixed 750 crashes after 24-36 hours of operating time which is caused by incoming parallel call been canceled too soon.

NEW FEATURES OVERVIEW

This section lists major new features and describes how to use it from the user's point of view.

CORE COLLECTION EMAIL

- **Web Configuration**

Add email field for core collection tools. Uses can leave a contact email to get feedbacks.

Your device recovered from a crash! Submit logs to Grandstream for troubleshooting?

GRANDSTREAM
 CONNECTING THE WORLD

STATUS PROFILES DECT SETTINGS **MAINTENANCE** PHONEBOOK

Version 1.0.3

Maintenance
 Firmware Upgrade
 Provisioning
 Web/SSH Access
 TR-069
 Security Settings
 Date and Time
 Syslog
 Packet Capture
 Factory Reset
 Support
 Support Documentation
 Configuration Support
Debug Tools

Debug Tools

Remote Log Submission - Terms & Conditions

The log files listed below are generated automatically if the usability of the device is affected. By clicking the Submit button, you agree to allow the device to send these files to Grandstream to be used for troubleshooting purposes. If possible, please include a comment with information regarding the use of the device when the problem occurred.

As an alternative to the device submitting the files, you may download the files below and submit them to Grandstream manually.

Agree to Terms? ☐ Yes, allow sending of crash logs to Grandstream.

Email Address

Comments

Debug Log Files

forced_core_cmbs_nvrn_db_DP750_FW_R1_0_3_21_MAC_...core.tar Tue Feb 28 15:14:02 2017 [Download](#)

Delete All Files

Terminate Phone Process

Handset Notification

Prompt Handsets After Recovery? ☐ Yes ☒ No

- New P Values**

Pvalue	Description	Value range	Default
P27774	<New Pvalue> Contact email address for core dump files	String max 256 bit	null

DP720 FACTORY RESET DURING BOOTING UP

- Web Configuration**

No web configuration needed, this feature is a built-in for all DP720 since 1.0.3.22

- Functionality**

This feature is use combo keys to factory reset DP720 during booting up prior it's fully booted, to give DP720 the ability to recover from some extreme cases like self-reboot or stuck right after booted up.

The procedure for DP720 factory reset using combo key:

1. Connect the USB cable and power off DP720.
2. Power on DP720 and wait for Green LED.
3. Press 3 times Central Key (OK/Selection Key) quickly after Green LED on.

4. Press Speaker Key (left bottom) first and then Mute Key (right bottom) after Red LED on.
5. DP720 LED will start blinking in 3 colors: Green, Red and Orange if factory reset successful triggered.
6. Wait for about 1-3 minutes, the DP720 will boot up with setup wizard for initial language and date format settings.

HANDSET PROVISIONING FEATURE

- **Web Configuration**

To configure the handset provisioning, please browse the base station Web GUI at Maintenance -> Provisioning. This is the same page used for base station provisioning. Handset shares the settings of base station provisioning in the field in the red rectangle, and has its own settings in the blue rectangle. After enabled Handset Config Upgrade, need reboot the DP750 to take effect.

Maintenance

Firmware Upgrade

Provisioning

Web/SSH Access

TR-069

Security Settings +

Date and Time

Syslog

Packet Capture

Factory Reset

Support +

Provisioning

XML Config File Password

HTTP/HTTPS User Name

HTTP/HTTPS Password

Always send HTTP Basic Authentication Information
☒ No ☐ Yes

Verify host when using HTTPS
☒ No ☐ Yes

Provisioning via
☐ TFTP ☒ HTTP ☐ HTTPS

Config Server Path

Config File Prefix

Config File Postfix

Enable Handset Config Upgrade
☐ No ☒ Yes

Handset Config File Prefix

Handset Config File Postfix

Allow DHCP Option 43 and Option 66 to Override Server
☐ No ☒ Yes

Allow DHCP Option 120 to Override SIP Server
☒ No ☐ Yes

Provisioning via: Choose the method that the base station uses to request handset ipei config file. Can use TFTP, HTTP or HTTPS.

Config Server Path: Defines the server path for provisioning. Do not prepend address with "http://" or any other protocol.

Handset Config File Prefix: If configured, only the handset configuration file with the matching encrypted prefix will be downloaded and flashed into the device.

Handset Config File Postfix: If configured, only the handset configuration file with the matching encrypted postfix will be downloaded and flashed into the device.

- **Functionality**

When a DP720 registers to a DP750 for the first time or an already registered handset boots up, the DP750 will send a provisioning request for a file on the configured provisioning server, with location "Config_Server_Path/[Prefix][HS IPEI].xml[Postfix]". For example, if handset's IPEI number is 02c332b510, prefix is "ipei_", postfix is null, and config server path is "fw.grandstream.com/gs", the request URL is "fw.grandstream.com/gs/ipei_02c332b510.xml".

Example Configuration File

```
<?xml version="1.0" encoding="UTF-8"?>
<hs_config>
  <ipei>02c332b510</ipei>
  <hs_name>HS 1FEDE</hs_name>
  <sip>
    <line>
      <display_name>1FEDE_Line_1</display_name>
      <profile_name>profile1</profile_name>
      <user_id>5328</user_id>
      <auth_id>5328</auth_id>
      <password>password</password>
      <ring_type>DID</ring_type>
    </line>
  </sip>
  <hs_settings>
    <force_apply>1</force_apply>
    <admin>
      <disable_private_phonebook>0</disable_private_phonebook>
      <disable_shared_phonebook>0</disable_shared_phonebook>
      <disable_conference>0</disable_conference>
      <disable_transfer>0</disable_transfer>
      <custom_ringtone>2</custom_ringtone>
    </admin>
  </hs_settings>
</hs_config>
```



```

<auto_answer>0</auto_answer>
<cradle_answer>0</cradle_answer>
<cradle_answer>0</cradle_answer>
<remote_disconnect_tone_disable>0</remote_disconnect_tone_disable>
<disable_callwaiting_tone>0</disable_callwaiting_tone>
<lcd_backlight_cradle>0</lcd_backlight_cradle>
<key_up_idle_function>4</key_up_idle_function>
<key_down_idle_function>3</key_down_idle_function>
<key_left_idle_function>12</key_left_idle_function>
<key_right_idle_function>11</key_right_idle_function>
<key_up_call_function>0</key_up_call_function>
<key_down_call_function>0</key_down_call_function>
<key_left_call_function>14</key_left_call_function>
<key_right_call_function>13</key_right_call_function>
<left_softkey_idle_function>1</left_softkey_idle_function>
<right_softkey_idle_function>7</right_softkey_idle_function>
<left_softkey_call_function>16</left_softkey_call_function>
<right_softkey_call_function>17</right_softkey_call_function>
<mute_as_dnd>0</mute_as_dnd>
</user>
</hs_settings>
</hs_config>

```

For more detailed information, please go to DP750/DP720 [product page](#), at How to Guide section, found the [Handset Provisioning Guide](#).

- **New P Values**

Pvalue	Description	Value range	Default
P27014	<New Pvalue> Enable Handset Config Upgrade	0 – No 1 – Yes	0 – No
P27015	<New Pvalue> Handset Config File Prefix.	String	ipei_
P27016	<New Pvalue> Handset Config File Postfix.	String	NULL

DP750 DEBUG TOOLS

- **Web Configuration**

User can find the new option at Web ->Maintenance -> Support -> Debug Tools.

Maintenance

Firmware Upgrade
 Provisioning
 Web/SSH Access
 TR-069
 Security Settings
 Date and Time
 Syslog
 Packet Capture
 Factory Reset
 Support
 Support Documentation
 Configuration Support

Debug Tools

Debug Tools

Remote Log Submission - Terms & Conditions

The log files listed below are generated automatically if the usability of the device is affected. By clicking the Submit button, you agree to allow the device to send these files to Grandstream to be used for troubleshooting purposes. If possible, please include a comment with information regarding the use of the device when the problem occurred.

As an alternative to the device submitting the files, you may download the files below and submit them to Grandstream manually.

Agree to Terms? ☒ Yes, allow sending of crash logs to Grandstream.

Debug Log Files

NO LOG FILES

Terminate Phone Process

Generate Debug File

Handset Notification

Prompt Handsets After Recovery? ☐ Yes ☒ No

Save

Save and Apply

Reset

(Screenshot without debug log file)

Maintenance

Firmware Upgrade
 Provisioning
 Web/SSH Access
 TR-069
 Security Settings
 Date and Time
 Syslog
 Packet Capture
 Factory Reset
 Support
 Support Documentation
 Configuration Support

Debug Tools

Debug Tools

Remote Log Submission - Terms & Conditions

The log files listed below are generated automatically if the usability of the device is affected. By clicking the Submit button, you agree to allow the device to send these files to Grandstream to be used for troubleshooting purposes. If possible, please include a comment with information regarding the use of the device when the problem occurred.

As an alternative to the device submitting the files, you may download the files below and submit them to Grandstream manually.

Agree to Terms? ☒ Yes, allow sending of crash logs to Grandstream.

Comments

Something abnormal happens to my DP750 and DP720, please take a look of my debug log files, thanks. --Shawn

Submit Files

Debug Log Files

forced_core_cmbs_nvram_db_DP750_FW_R1_0_3_17_MAC_000B82870905_core.tar Tue Jan 24 10:25:29 2017 Download

Delete All Files

Delete

Terminate Phone Process

Generate Debug File

Handset Notification

Prompt Handsets After Recovery? ☐ Yes ☒ No

Save

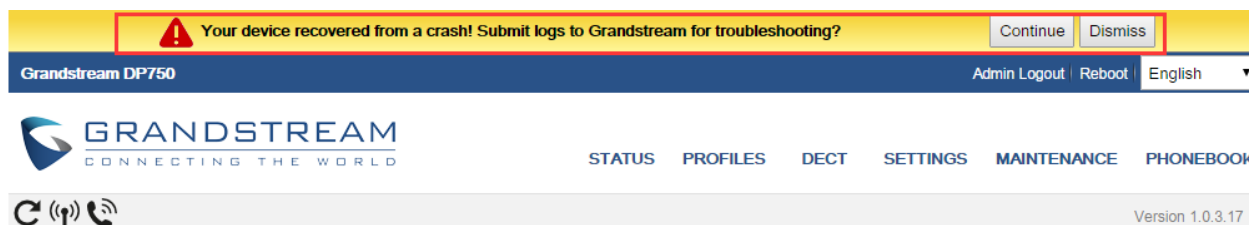
Save and Apply

Reset

(Screenshot with debug log file)

- **Functionality**

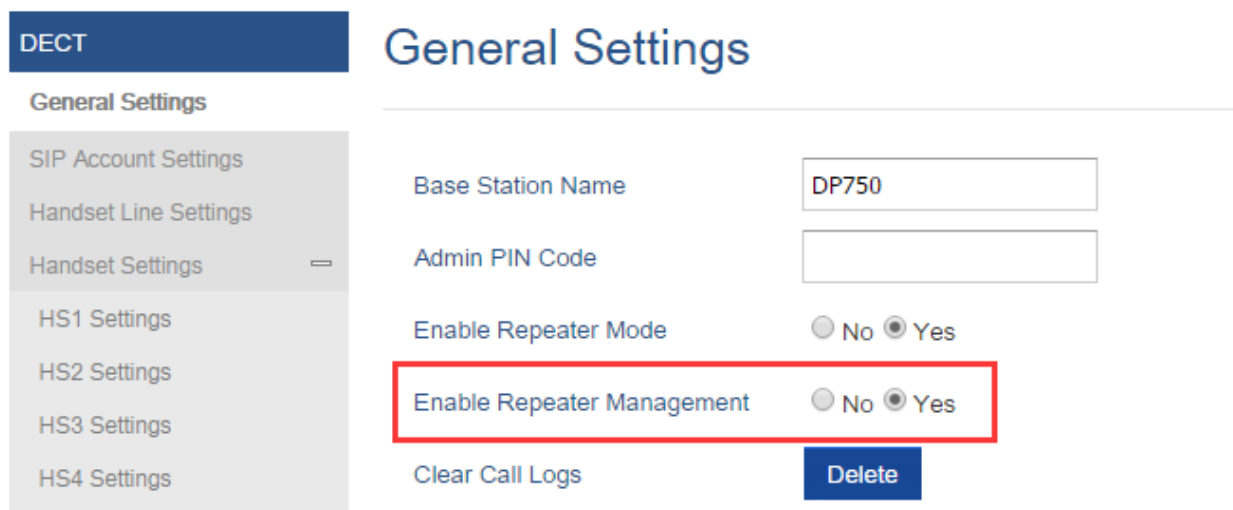
Allow user to generate debug log file and submit it to Grandstream debug server, or submit existing debug log file that self-generated from device crash. Grandstream will not collect any information without customers acknowledged and permissions. It will only send debug log file every time customer clicks the "Submit Button", after file successfully been sent, the old one will be deleted. Also when there is any debug log files exist, the web UI will prompt it to user every time login:



Pvalue	Description	Value range	Default
P27751	<New Pvalue> Agree to terms to allow sending crash logs to Grandstream.	0 – No 1 – Yes	1 – Yes
P27753	<New Pvalue> Configure if prompt handset if there are debug log files exist.	0 – No 1 – Yes	0 – No

REPEATER MANAGEMENT PAGE


- **Web Configuration**



- **Functionality**

After enabled Repeater Management, please reboot the base station first to take effect. Then login web UI

and browse to Status page, you will find the new tab names: DECT Repeater Status pages. In which you can find all the paired devices and discovered devices, you can simply link and unlink the repeater by click the button. You can also access the web UI of the repeaters by click the IP links.


Version 1.0.3.17

Status

Account Status

DECT Base Status

DECT Repeater Status

Line Options

Network Status

System Info

DECT Repeater Status

Paired Devices

Model	Name	IP	MAC	Status	Signal Strength	Active Calls	Unlink
DP760	DP760_9e2764	192.168.219.32	000b829e2764	online	RF Link is excellent	0	Unlink

Discovered Devices

Model	Name	IP	MAC	Link
DP760	DP760_9e2768	192.168.219.34	000b829e2768	Link
DP760	DP760_9e2762	192.168.219.31	000b829e2762	Link
DP760	DP760_9e2767	192.168.219.33	000b829e2767	Link
DP760	DP760_9e276e	192.168.219.35	000b829e276e	Link

Grandstream Networks Support
Copyright © 2017. All Rights Reserved.

Pvalue	Description	Value range	Default
P27019	<New Pvalue> Enable Repeater Management feature, need reboot device to take effect.	0 – No 1 – Yes	0 – No

BACKUP CONFIGURATION

- Web Configuration**

User can find the new option at Web -> Maintenance -> Provisioning. (at the bottom of the page)

Backup Configuration

Backup Configuration

Backup Settings

cfg000B82870905-2017-01-05-16-54-13.xml Thu Jan 5 16:54:28 2017 [Download](#)

Delete

- Functionality**

Click “Backup Settings” Button, device will generate an xml config file storing all the current configuration on device itself. After clicked, please wait a few seconds then click the refresh button on the page icon bar or wait for the page self-refresh, you will found the xml list to download then. And support maximum 10 backup files. When it reaches 10 entries this feature will be disabled and the web UI will looks like below:

Backup Configuration

Backup Configuration

DISABLED (MAX OF 10 CONFIG FILES REACHED)

cfg000B82870905-2017-01-05-16-54-13.xml Thu Jan 5 16:54:28 2017 [Download](#)
 cfg000B82870905-2017-01-24-11-20-59.xml Tue Jan 24 11:21:14 2017 [Download](#)
 cfg000B82870905-2017-01-24-11-22-17.xml Tue Jan 24 11:22:32 2017 [Download](#)
 cfg000B82870905-2017-01-24-11-23-41.xml Tue Jan 24 11:23:57 2017 [Download](#)
 cfg000B82870905-2017-01-24-11-24-08.xml Tue Jan 24 11:24:24 2017 [Download](#)
 cfg000B82870905-2017-01-24-11-24-55.xml Tue Jan 24 11:25:10 2017 [Download](#)
 cfg000B82870905-2017-01-24-11-26-38.xml Tue Jan 24 11:26:52 2017 [Download](#)
 cfg000B82870905-2017-01-24-11-26-59.xml Tue Jan 24 11:27:15 2017 [Download](#)
 cfg000B82870905-2017-01-24-11-27-15.xml Tue Jan 24 11:27:31 2017 [Download](#)
 cfg000B82870905-2017-01-24-11-27-39.xml Tue Jan 24 11:27:55 2017 [Download](#)

Caution: Click Delete button will delete all the configuration, please download all the configuration files before you click the “Delete” button, after configuration files been delete, the UI will looks like below:

Backup Configuration

Backup Configuration

Backup Settings

Backup Configuration

NONE

UPNP DISCOVERY

- Web Configuration**

User can find the new option at Web -> Settings -> Networks Settings -> Advanced Settings.

UPnP Discovery Settings

Enable UPnP discovery

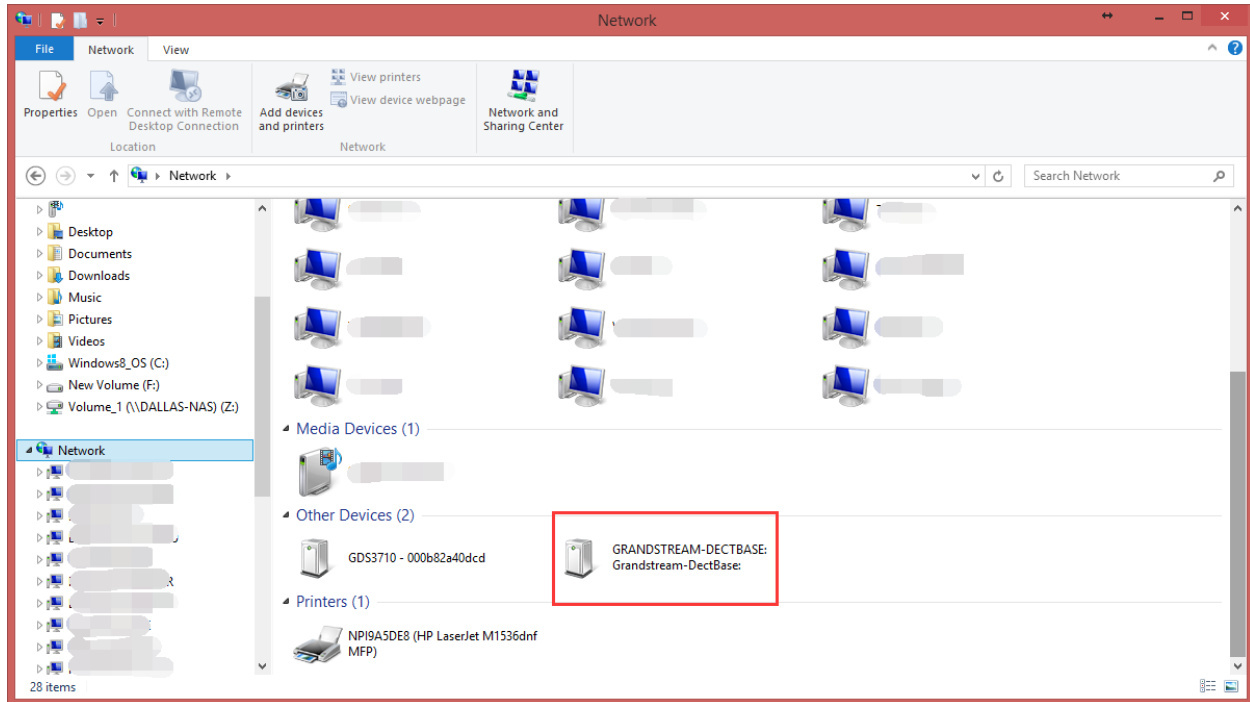
☐ No ☒ Yes

UPnP discovery notify interval

30

- Functionality**

Enables UPnP discovery feature. After enabled, if you have a PC in the same network of DP750, you can browse it directly in your Network. Double click the device will open its web GUI in your default browser. The UPnP Discovery notify interval is set how often it will refresh to find the device, default interval is 30 seconds.



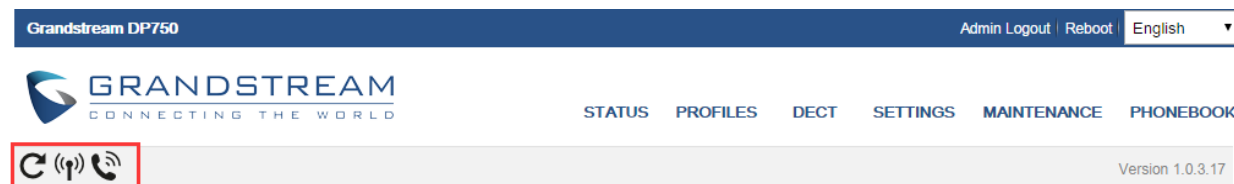
- **New P Values**

Pvalue	Description	Value range	Default
P27756	<New Pvalue> P value to enable/disable UPnP discovery	0 or 1 0: No (Disabled) 1: Yes (Enabled)	1
P27757	<New Pvalue> Pvalue to set the interval of UPnP discovery notify	15 - 86400 (seconds)	30

ICON BAR WITH SHORTCUT ICON BUTTON

- **Web Configuration**

User can find the icon bar right below the main menu of every page.



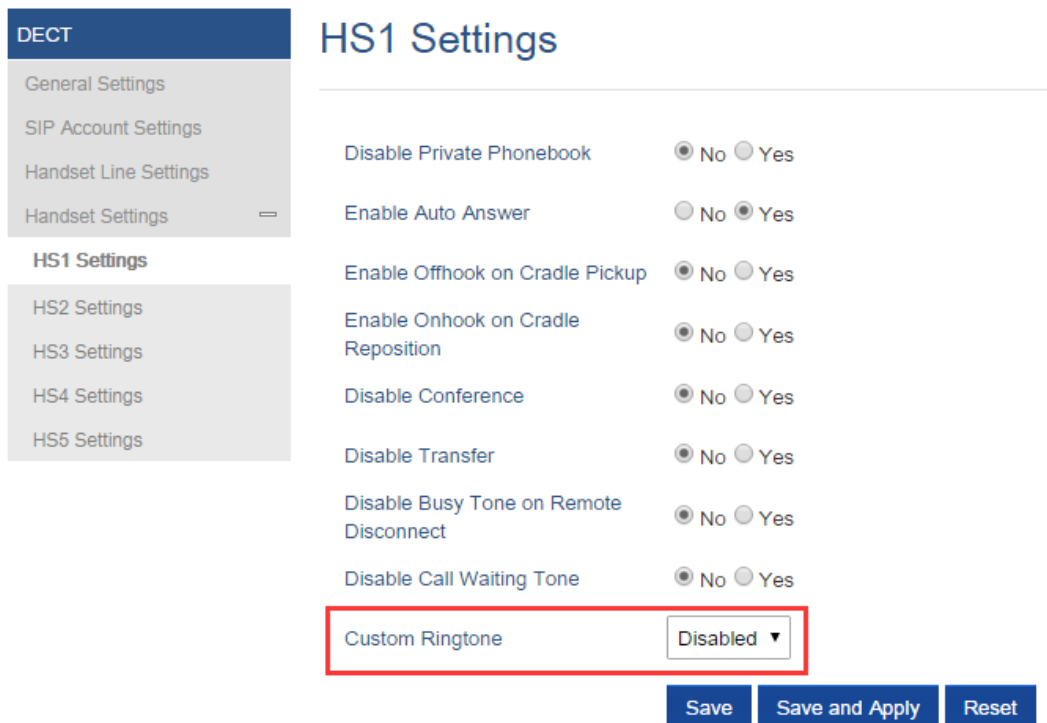
- **Functionality**

The first icon is click to refresh the current page. The second icon is used to enable subscription. The third icon is used to page all the handset.

CUSTOMIZE DP720 RINGTONES

• Web Configuration

Once use firmware provisioning method uploaded .bin ringtone files, users can assign custom ringtone to specific handset at Web -> DECT -> Handset Settings.



• Functionality

DP750/DP720 now support customized ringtones now. It takes up to 10 ringtone files which have be named as ring1.bin to ring10.bin, and you can assign one ringtone to each handset in the web UI as the screenshot above.

Steps of configuring a custom ringtone to a handset:

1. Get ringtone files that accepted by DP devices. DP750 and DP720 only support .bin ringtone file. Please use the ring generator tools named “Grandstream IP Phone Custom Ringtone Generator” at our official website: <http://www.grandstream.com/support/tools>
Each ringtone files can maximum be 128KB and have to be named in ringX.bin, X can be 1 to 10.
2. Put the ringX.bin file under the firmware provisioning path, reboot DP750, it will fetch the .bin ringtone file as the same way as fetch firmware.
3. After DP750 booted up, browser to Web -> DECT -> HS Settings, at the Cutom Ringtone, you will see the uploaded ringtone listed under the drop down box. Select the one you want to use for each handset.
4. Save and Apply, wait the DP720 fully downloaded the ringtone, you will be able to set DP720 to use that ringtone.

Each handset only able to use one custom ringtone and DP750 maximum support 10 custom ringtone. You might need refresh the page of HSx Settings page to display the uploaded ringtone. Below is screenshot of how it looks like when there is a custom ringtone.

DECT

General Settings

SIP Account Settings

Handset Line Settings

Handset Settings ≡

HS1 Settings

HS2 Settings

HS3 Settings

HS4 Settings

HS5 Settings

HS1 Settings

Disable Private Phonebook

☒ No ☐ Yes

Enable Auto Answer

☐ No ☒ Yes

Enable Offhook on Cradle Pickup

☒ No ☐ Yes

Enable Onhook on Cradle Reposition

☒ No ☐ Yes

Disable Conference

☒ No ☐ Yes

Disable Transfer

☒ No ☐ Yes

Disable Busy Tone on Remote Disconnect

☒ No ☐ Yes

Disable Call Waiting Tone

☒ No ☐ Yes

Custom Ringtone

Disabled
▼

Disabled

/var/user/handset/ringtones/ring2.bin

ENHANCED FACTORY RESET

- Web Configuration**

User can set DP750 reset button behavior at Web -> Maintenance -> Factory Reset:

Maintenance

Firmware Upgrade

Provisioning

Web/SSH Access

TR-069

Security Settings +

Date and Time

Syslog

Packet Capture

Factory Reset

Support +

Force Reboot/Factory Reset

Force Reboot

Reboot

Configure Web UI Button

Reset Type

Full Factory Reset
▼

Perform Selected Reset

Reset

Configure Hardware Button

Reset Type

Full Factory Reset
▼

Save

Save and Apply

Reset

- Functionality**

Allow user to configure the behavior of Web UI reset button and hardware button on device itself.

There are 3 reset type for Web UI button:

1. Full Factory Reset - This will reset all the settings.
2. NVRAM Settings Only - This will reset all the settings except subscription information, so the handset will stay in subscribed after reset, but all the other settings like account info, call settings, audio settings, etc. will be reset.
3. DECT Settings Only – This will reset only the subscription (wipe out all the subscription information), but keep all the other settings like account, SIP settings.

There are 4 reset types for Hardware button:

1. Full Factory Reset - This will reset all the settings.
2. NVRAM Settings Only - This will reset all the settings except subscription information, so the handset will stay in subscribed after reset, but all the other settings like account info, call settings, audio settings, etc. will be reset.
3. DECT Settings Only – This will reset only the subscription (wipe out all the subscription information), but keep all the other settings like account, SIP settings.
4. Disabled – This will disable the hardware button to factory reset the base for security purpose.

- **New P Values**

Pvalue	Description	Value range	Default
P27766	<New Pvalue> Pvalue to set the behavior of Web UI reset button.	0: Full Factory Reset 3: NVRAM Settings Only 4: DECT Settings Only	0
P88	<New Pvalue> Pvalue to set the behavior of hardware reset button.	0: Full Factory Reset 3: NVRAM Settings Only 4: DECT Settings Only 1: Disabled	0

RENAME THE PROFILE

- **Web Configuration**

User can set DP750 each profile's name at Web -> Profiles -> each profile tab.



The screenshot shows the 'Profiles' section on the left sidebar with 'Profile 1' selected. The main area displays 'General Settings' for 'Profile 1'. The 'Profile Active' status is set to 'Yes'. The 'Profile Name' field is highlighted with a red box and contains the text 'profile1'. Other fields include 'SIP Server' with the value '192.168.254.5' and 'Failover SIP Server' which is empty.

- **Functionality**

Custom the name of the profile, this profile name also been used in handset config provisioning for validation. By default, the value are profile1 – profile4.

- **New P Values**

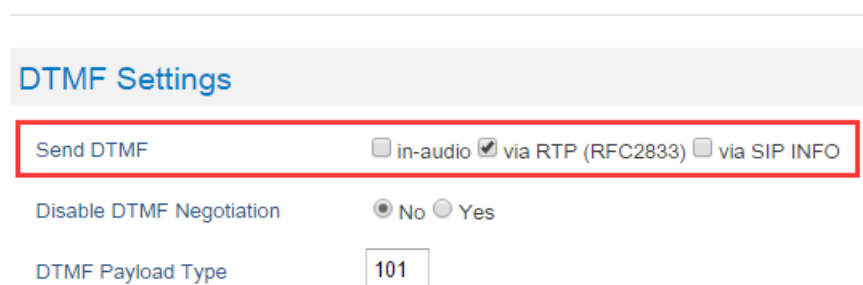
Pvalue	Description	Value range	Default
P27762	<New Pvalue> Pvalue to set the name of profile 1	String	profile1
P27763	<New Pvalue> Pvalue to set the name of profile 2	String	profile2
P27764	<New Pvalue> Pvalue to set the name of profile 3	String	profile3
P27765	<New Pvalue> Pvalue to set the name of profile 4	String	profile4

SEND SIP INFO AND RFC2833 AT SAME TIME

- **Web Configuration**

User can set DP750 each profile's name at Web -> Profiles -> each profile tab -> Audio Settings.

Audio Settings



DTMF Settings

Send DTMF ☐ in-audio ☒ via RTP (RFC2833) ☐ via SIP INFO

Disable DTMF Negotiation ☒ No ☐ Yes

DTMF Payload Type

- **Functionality**

DP750 used to able to select one of the DTMF type out of in-audio, RFC2833 and SIP INFO, now the option changed from drop down box single-select to multiple check box. So use can choose to use multiple types at the same type.

- **New P Values**

Pvalue	Description	Value range	Default
P2301	<New Pvalue> Pvalue to set if in-audio DTMF type enabled for profile 1	0 – not checked 1 - checked	0
P2302	<New Pvalue> Pvalue to set if RFC2833 DTMF type enabled for profile 1	0 – not checked 1 - checked	1

P2303	<New Pvalue> Pvalue to set if SIP INFO DTMF type enabled for profile 1	0 – not checked 1 - checked	0
P2401	Pvalue to set if in-audio DTMF type enabled for profile 2	0 – not checked 1 - checked	0
P2402	<New Pvalue> Pvalue to set if RFC2833 DTMF type enabled for profile 2	0 – not checked 1 - checked	1
P2403	<New Pvalue> Pvalue to set if SIP INFO DTMF type enabled for profile 2	0 – not checked 1 - checked	0
P2501	Pvalue to set if in-audio DTMF type enabled for profile 3	0 – not checked 1 - checked	0
P2502	<New Pvalue> Pvalue to set if RFC2833 DTMF type enabled for profile 3	0 – not checked 1 - checked	1
P2503	<New Pvalue> Pvalue to set if SIP INFO DTMF type enabled for profile 3	0 – not checked 1 - checked	0
P2601	Pvalue to set if in-audio DTMF type enabled for profile 4	0 – not checked 1 - checked	0
P2602	<New Pvalue> Pvalue to set if RFC2833 DTMF type enabled for profile 4	0 – not checked 1 - checked	1
P2603	<New Pvalue> Pvalue to set if SIP INFO DTMF type enabled for profile 4	0 – not checked 1 - checked	0

FIRMWARE VERSION 1.0.2.16

PRODUCT NAME

DP750 and DP720

DATE

08/11/2016

IMPORTANT UPGRADING NOTE

- **For DP750/DP720, once upgraded to 1.0.2.16 or above, downgrading to 1.0.1.x firmware version or lower is not supported.**

ENHANCEMENT

- Added support for entering Plus Button '+' in DP720
- Added DP720 LCD auto turn on feature when pickup from or reposition to charger
- Added Access Control List to control access to web and SSH interfaces [ACCESS CONTROL LIST]
- Added option to enable/disable TR-069 [ENABLE/DISABLE TR-069]
- Added status display as "Normal" when core dump list is empty [CORE DUMP LIST STATUS]
- Added support for HTTPS web access [HTTPS WEB ACCESS]
- Added initial support for Repeater mode [INITIAL SUPPORT FOR REPEATER]
- Added Admin/User Guides and Drilling Template to web GUI support page [DOCUMENTS ADDED TO SUPPORT PAGE]
- Added headset detection and icon for DP720 dial mode screen
- Added Serbian, Slovakian and Swedish languages. Improved support for Czech, Dutch, German, Hebrew, Japanese, Korean, Turkish, Polish languages. [LANGUAGES UPDATED]

BUG FIX

- Fixed DP750 will be "no service" if handset receives incoming call just when make new conference call
- Fixed enable Automatic XML Phonebook Download function was invalid
- Fixed after dial out code star feature, FXS LED keep blinking
- Fixed Priority value for RTP media for layer 2 QoS Settings always be 0 after changed values
- Fixed when handset default line set to none at base side, then change default line from handset side will make base server down.
- Fixed DP750 does not taking IP address from networks with LLDP option enabled
- Fixed incoming call not always rejected when HS is off hook
- Fixed NAPTR/SRV setting does not work
- Fixed DP750 does not taking IP address from networks with LLDP option enabled.
- Fixed "Add Auth Header On Initial REGISTER" option does not work

- Fixed DUT will leave a hold call when transfer failed
- Fixed after receiving incoming call with parallel/share mode some handsets cannot ring in page function
- Fixed call forwarding settings only allow 8 - 10 digits
- Changed DP720 menu "Line Status" in Call Settings to "Lines" for more accurate description
- Fixed handset cannot auto answer paging
- Fixed handset cannot display incoming calls when stay in factory reset confirm interface
- Change menu "Number" in Set Voice Mail to "VM Access Number" for more intuitive description
- Fixed call log sometimes record wrong duration time
- Fixed change ring tone would lead to the volume of call become bigger
- Fixed in contact 'search' interface, "delete" option displays as "back"
- Fixed call waiting tone only play once
- Fixed if click "reboot" option during calling, device does not reboot after called automatically
- Fixed "Number" field is empty when editing XML phonebook contact if phone type is "WORK"
- Fixed deleting all shared contacts might delete other handsets' private contacts
- Fixed Broadsoft IOT related bug that Invite with Alert-info is not playing desired tone
- Fixed Broadsoft IOT related bug that Inband DTMF not working
- Fixed Broadsoft IOT related bug that add ability to bridge conference before third party answers
- Fixed Broadsoft IOT Call transfer issue
- Fixed Broadsoft IOT related issue that in Call Manager "answer call" and "hold" function not working correctly
- Fixed handset can press conference or other options when it is in early media
- Fixed DUT could not call out after removing second line with same account
- Fixed when answer the 2nd call, remote side would hear a serious noise.
- Fixed call manager "answer call" and "hold" function not working correctly
- Fixed ringtone volume cannot restore in next incoming call after adjust ringtone volume to minimum during incoming call
- Fixed if the length of sip settings value is bigger than 12 characters in web, the handset side would display blank
- Fixed handset cannot make new call directly on contacts.
- Fixed no clock display during calling
- Fixed DP720 does not play out audio with professional Sennheiser mono headset, neither single SC230 nor dual SC262
- Fixed if click press "speaker" key quickly after off hook, audio channel will not switch to the speaker
- Fixed handset does not play ringtone when receiving incoming call in parallel or shared mode, and it cannot answer the call
- Fixed when transfer a call, device will send INVITE to the third party before sending REFER
- Fixed device will fail to transfer if the first session is hold, then handset will always prompt user unknown when calling
- Fixed handset will not play CW tone if it is in select contact UI
- Fixed digits not sent to base when 24-digit number entered via on-hook dialing (limit to 20 digits)
- Fixed speaker icon was not disappeared but actually HS was in earpiece mode

- Fixed handset lacks characters "" and "&"
- Fixed handset auto-save the volume after adjusted the alarm volume without saving
- Fixed melody setting in individual contact is not working
- Fixed handset will crash if pressing '1' or '4' key just when booting up
- Fixed handset info displayed new IP address after saving new static IP in handset without reboot
- Fixed "Delayed Call Forward Wait Time" option on web is invalid
- Fixed sometimes base will still ring next handset but server already cancels the call
- Fixed direct dial on contact menu will only dial out via contact's home number
- Fixed DNS Settings is inconsistency between DNS Server 1, DNS Server 2 and Preferred DNS Server
- Fixed after back to main menu, the icon used to indicate there are Missed Calls and Voice Messages disappeared
- Fixed DP720 Speed dial only display first name which should be both first name and last name
- Fixed if handset play standard ring tone before off hook it will in speaker mode
- Fixed the contact cannot be saved with more than 35 characters
- Fixed DUT can re-dial with outgoing number is empty
- Fixed the redial option cannot be used if "Use # as Dial Key" is set to NO
- Fixed after handset selected another base the original base still marked this handset as online
- Fixed the session will be hung up if unplug headset during the call
- Fixed when handset hold the call, FXS led did not blink
- Fixed DUT as transferee cannot back to call if transfer failed
- Fixed if press back key when loading contact in speed dial menu HS will back to main interface
- Fixed if handset generate two missed call history at the same time, the first missed call history name would display blank
- Fixed the call history display order is not from latest to oldest
- Fixed handset does not display LDAP contacts
- Fixed after receiving incoming call with parallel/share mode device always responded 408
- Fixed handset will display error when search LDAP contacts
- Fixed Web GUI cannot be accessed when use PPOE mode
- Fixed Web GUI cannot be accessed when use Qos2
- Fixed handset search contacts function does not work
- Fixed if the third party answers & ends the call quickly the original session will be abnormal
- Fixed handset will auto exit new call UI if receiving incoming call during new call process
- Fixed HS did not auto answer the call from contact that has been configured melody
- Fixed user cannot check sip server name in sip settings by pressing right soft key
- Fixed handset status did not update base mac address after subscribed another base
- Fixed the name of right soft key is displayed as "delete" but actually there is no entry
- Fixed missed call LED still flash after viewing all missed call logs
- Fixed Session Expiration value can set to small then Min-SE value
- Fixed HS cannot update CID while in alerting state
- Fixed it will not record missed call in Parallel and Shared mode
- Fixed SIP accounts cannot register to Failover SIP Server except account 1

- Fixed it will not record accepted call in Parallel and Shared mode
- Fixed DUT will not play melody ringtone when handset stay in contact list interface
- Fixed handset popped up menu for a moment every time it received incoming call
- Fixed if edit dialing number that more than 20 characters on call history HS will be block in blank interface
- Fixed remote end also heard the CW tone which was generated by HS
- Fixed device does not respond 486 if HS calls to internal HS with the fourth call
- Fixed if HS is in status UI when BS boots up the HS will not register to BS
- Fixed battery icon need change to white color icon
- Fixed green button is not always act as "Send" when making transfer and conference call

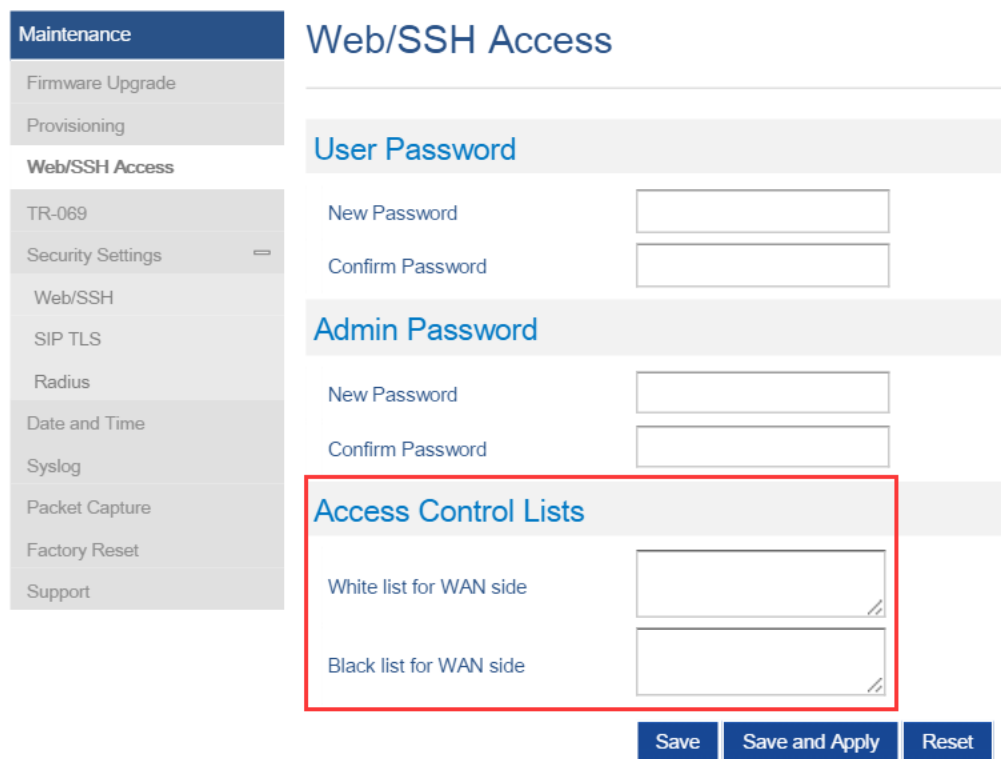
NEW FEATURES OVERVIEW

This section lists major new features and describes how to use it from the user's point of view.

ACCESS CONTROL LIST

- Web Configuration**

These settings can be found at Web -> Maintenance -> Web/SSH Access



Maintenance

- Firmware Upgrade
- Provisioning
- Web/SSH Access**
 - TR-069
 - Security Settings
 - Web/SSH**
 - SIP TLS
 - Radius
 - Date and Time
 - Syslog
 - Packet Capture
 - Factory Reset
 - Support

Web/SSH Access

User Password

New Password

Confirm Password

Admin Password

New Password

Confirm Password

Access Control Lists

White list for WAN side

Black list for WAN side

Save **Save and Apply** **Reset**

- Functionality**

If added IP address to White list for WAN side field, then only the IP address in white list can access Web and Telnet.

If added IP address to Black list for WAN side field, then The IP address in black list will cannot access Web or Telnet.

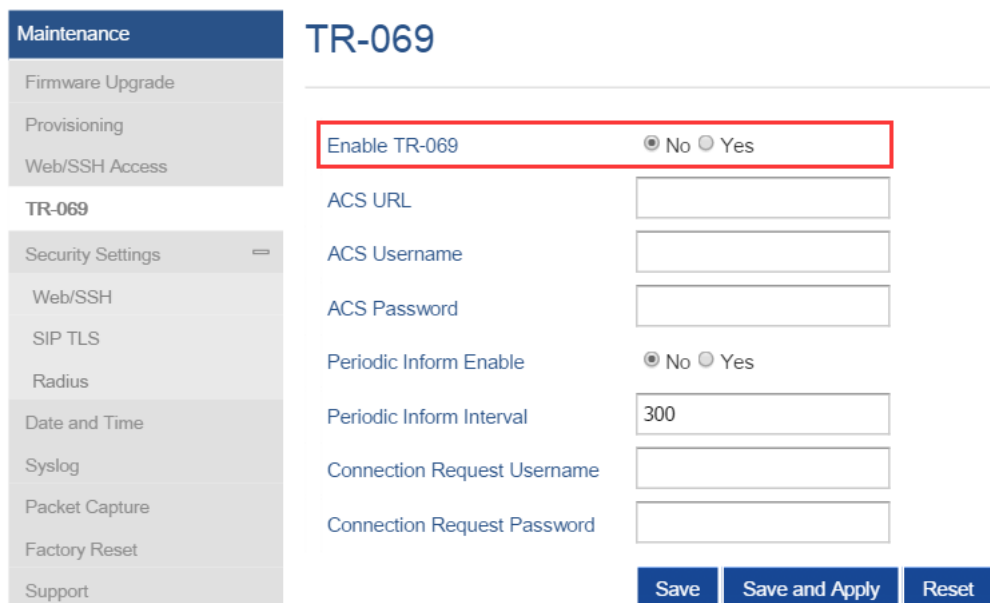
- New P Values**

Pvalue	Description	Value range	Default
P20701	<New Pvalue> White list for WAN side.	ipaddress	
P20702	Black list for WAN side.	ipaddress	

ENABLE/DISABLE TR-069

- Web Configuration**

User can find the new option at Web ->Maintenance -> TR-069.



- **Functionality**

Allow user to enable and disable TR-069 function.

Pvalue	Description	Value range	Default
P1409	<New Pvalue> Enable or disable TR-069.	0 - No 1 - Yes	0 - No

CORE DUMP LIST STATUS

- **Web Configuration**

Core Dump

Core Dump

NORMAL

- **Functionality**

If there is no Core Dump file, display a "Normal" Status.

HTTPS WEB ACCESS

- **Web Configuration**

User can find the new option at Web -> Maintenance -> Security Settings -> Web/SSH.

Maintenance

Firmware Upgrade

Provisioning

Web/SSH Access

TR-069

Security Settings ≡

Web/SSH

SIP TLS

Radius

Date and Time

Syslog

Packet Capture

Factory Reset

Support

Web/SSH Settings

HTTP Web Port

HTTPS Web Port

Web Access Mode

☐ HTTPS
☒ HTTP

Disable SSH

☒ No
☐ Yes

SSH Port

Save

Save and Apply

Reset

- Functionality**

New options added to allow user to enable HTTPS Web Access Mode and config HTTPS Web Port. After enabled HTTPS mode, will need reboot the DP750 to take effect the settings. Then can access the device by <https://IPADDRESS:PORTS>, for example: <https://192.168.1.18:443>

- New P Values**

Pvalue	Description	Value range	Default
P27010	<New Pvalue> Port for HTTPS web access. The default setting is 443	1 - 65535	443
P1650	<New Pvalue> Sets the protocol for the web interface.	0 or 1 0: HTTPS 1: HTTP	1

INITIAL SUPPORT FOR REPEATER

- Web Configuration**

User can find the new option at Web -> DECT -> General Settings. A new option “Enable Repeater Mode” is added.

DECT

General Settings

SIP Account Settings

Handset Line Settings

General Settings

Base Station Name

DP750_8a4768

Admin PIN Code

Enable Repeater Mode

☒ No
 ☐ Yes

Clear Call Logs

Delete

Handset Settings

Handset	Handset Name	Handset Phonebook	Offhook Auto-dial
HS1	HS1	PB1	
HS2	HS2	PB2	
HS3	HS3	PB3	
HS4	HS4	PB4	
HS5	HS5	PB5	

Save

Save and Apply

Reset

• Functionality

Add initial support for repeater function. Add option to enable /disable repeater mode, the change for this option will need reboot DP750 to take effect.

Right now GS's repeater hasn't official released and DP750 only support EU repeater, we will add support for US repeater later.

Step to Pair a repeater:

1. Make sure you base is in EU region, display in Web GUI as below:

Base DECT RF Region EU

2. Make sure your repeater is EU standard.
3. Set Enable Repeater Mode to "Yes", Click Save and Apply, then reboot base take effect the settings.
4. Click "Subscribe" button in Web -> Status -> DECT Status as below screenshot or long press Page button on DP750 for 7 7 seconds to open subscription:

Open Subscription

Subscribe

5. Repeater will automatically pair to DP750
6. We don't have feature to display repeater connection status right now, but repeater LED should show the connection established.

- **New P Values**

Pvalue	Description	Value range	Default
P20002	<New Pvalue> Pvalue to enable/disable base station repeater mode.	0 or 1 0: No (Disabled) 1: Yes (Enabled)	0

DOCUMENTS ADDED TO SUPPORT PAGE

- **Web Configuration**

User can find the new item at Web -> Maintenance -> Support. Offline Admin/User Guide and Drilling Template can be download from DP750 now.

Maintenance

Firmware Upgrade

Provisioning

Web/SSH Access

TR-069

Security Settings

Web/SSH

SIP TLS

Radius

Date and Time

Syslog

Packet Capture

Factory Reset

Support

Support

Online Support

[DP750 Product Page](#)
[Cordless IP Phones | Grandstream Networks](#)

[Support Tools](#)
[Tools | Grandstream Networks](#)

Offline Support

[Administration Guide](#)
[DP750/DP720 Administration Guide](#)

[User Guide](#)
[DP750/DP720 User Guide](#)

[Drilling Template](#)
[MD Hole Location for Wall Mount](#)

Download Default Device Configuration

[Default Device Config \(Text\)](#)
[Download](#)

[Default Device Config \(XML\)](#)
[Download](#)

Download UCM Zero Config Template

[Versions 1.0.10.43 to latest](#)
[Download](#)

[Versions 1.0.10.38 to 1.0.10.42](#)
[Download](#)

[Versions 1.0.10.1 to 1.0.10.37](#)
[Download](#)

Save

Save and Apply

Reset

LANGUAGES UPDATED

- **Web Configuration**

User can set DP750 language at Web right-top side. User can set DP720 language at handset GUI ->

Settings -> Phone Languages.

