

GWN700X Router Firmware Release Notes

IMPORTANT UPGRADING NOTE

- 1. GWN700x 1.0.5.35 requires GWN Manager version to be at least 1.1.28.27 or newer.**
2. Downgrading from firmware 1.0.5.x or higher version to 1.0.3.x or lower version will cause device to perform factory reset automatically. All device configurations will be reset to factory default settings after downgrading.

Table of Content

IMPORTANT UPGRADING NOTE	1
FIRMWARE FILE DOWNLOAD	4
FIRMWARE VERSION 1.0.5.35	5
PRODUCT NAME	5
DATE.....	5
FIRMWARE FILE INFORMATION	5
CHANGES/ENHANCEMENT	5
FIRMWARE VERSION 1.0.5.30	6
PRODUCT NAME	6
DATE.....	6
FIRMWARE FILE INFORMATION	6
CHANGES/ENHANCEMENT	6
NEW FEATURE OVERVIEW.....	6
FIRMWARE VERSION 1.0.5.7	7
PRODUCT NAME	7
DATE.....	7
FIRMWARE FILE INFORMATION	7
CHANGES/ENHANCEMENT	7
FIRMWARE VERSION 1.0.5.6	8
PRODUCT NAME	8
DATE.....	8
FIRMWARE FILE INFORMATION	8
CHANGES/ENHANCEMENT	8
NEW FEATURE OVERVIEW.....	9
FIRMWARE VERSION 1.0.3.5	13
PRODUCT NAME	13
DATE.....	13
FIRMWARE FILE INFORMATION	13
CHANGES/ENHANCEMENT	13
FIRMWARE VERSION 1.0.3.4	14
PRODUCT NAME.....	14

DATE.....	14
FIRMWARE FILE INFORMATION	14
CHANGES/ENHANCEMENT	14

FIRMWARE VERSION 1.0.1.6 15

PRODUCT NAME.....	15
DATE.....	15
FIRMWARE FILE INFORMATION	15
CHANGES/ENHANCEMENT	15

FIRMWARE FILE DOWNLOAD

Individual firmware files are available for downloading at URL below:

<https://www.grandstream.com/support/firmware>

FIRMWARE VERSION 1.0.5.35

PRODUCT NAME

GWN7001 / GWN7002 / GWN7003

DATE

06/24/2024

FIRMWARE FILE INFORMATION

- GWN700x Firmware file name: gwn700xfw.bin
MD5 checksum: 13591e969ab15a297abf70e207f5791c

CHANGES/ENHANCEMENT

- Enhanced security by adding support for GWN Manager that new access devices require password authorization for Layer 2 discovery.

FIRMWARE VERSION 1.0.5.30

PRODUCT NAME

GWN7001 / GWN7002 / GWN7003

DATE

01/23/2024

FIRMWARE FILE INFORMATION

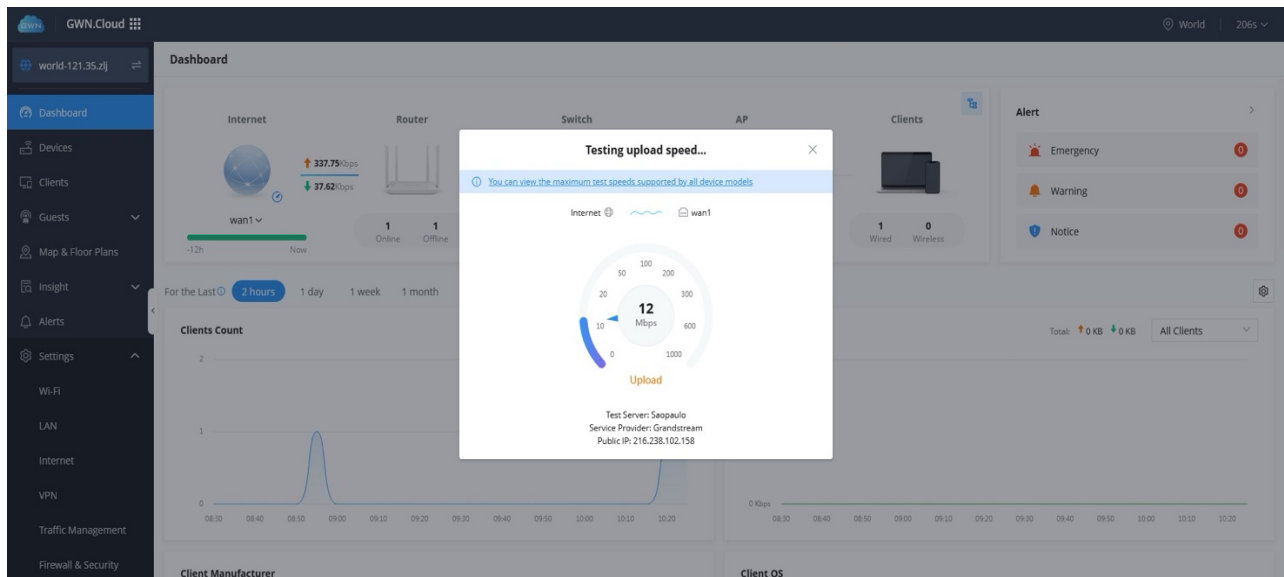
- GWN700x Firmware file name: gwn700xfw.bin
MD5 checksum: 9b9daf917dd0d0b869ed01524e4e683a

CHANGES/ENHANCEMENT

- Added the new feature of **Speed test**
- Added the new feature of **ISP default configuration**
- Internal bug fixes

NEW FEATURE OVERVIEW

- **Speed test**



- **ISP default configuration**

With the provided gs configuration tool, administrators can provision an ISP default configuration to the router. After provisioning, by performing factory reset, the device will restore to the customized default configuration other than the original factory default settings.

FIRMWARE VERSION 1.0.5.7

PRODUCT NAME

GWN7001 / GWN7002 / GWN7003

DATE

12/15/2023

FIRMWARE FILE INFORMATION

- GWN700x Firmware file name: gwn700xfw.bin
MD5 checksum: 6c6f845a68ff9290fdf4e88a3230751e

CHANGES/ENHANCEMENT

- Removed the DHCP range restriction on Static IP assignment which was added in 1.0.5.6
- Internal bug fixes

FIRMWARE VERSION 1.0.5.6

PRODUCT NAME

GWN7001 / GWN7002 / GWN7003

DATE

11/10/2023

FIRMWARE FILE INFORMATION

- GWN700x Firmware file name: gwn700xfw.bin
MD5 checksum: 2d2479ff320d6dbce1c5eac2ab21c27e

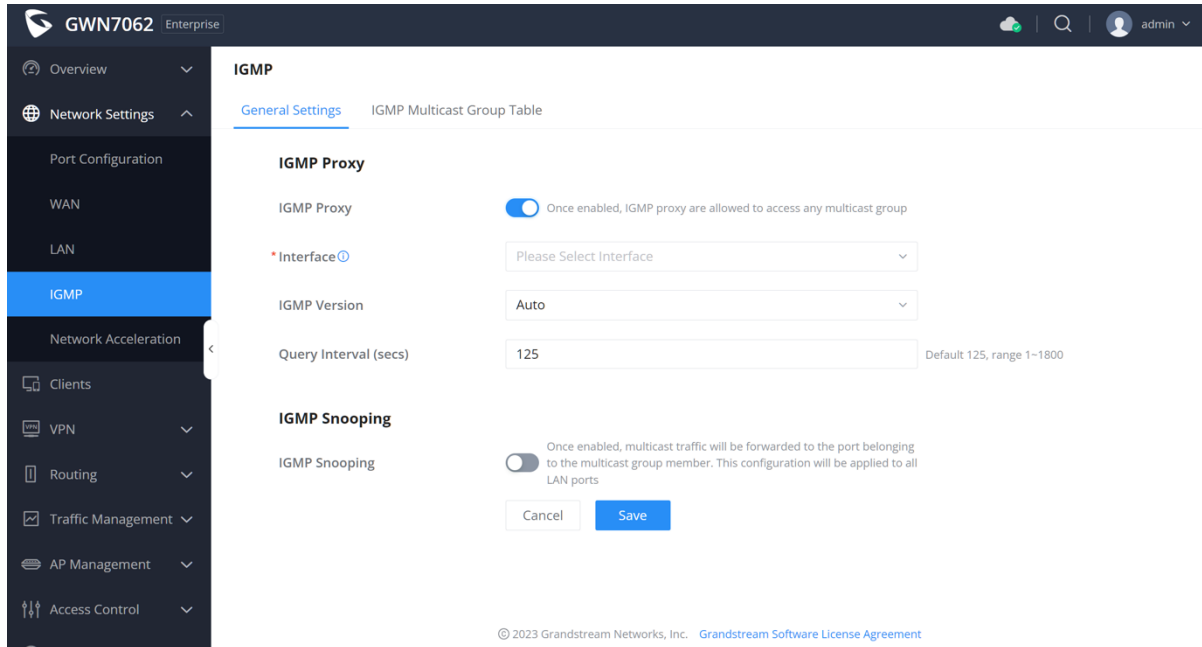
CHANGES/ENHANCEMENT

- Added new feature of **IGMP**
- Added new feature of **HostName** access
- Added new feature of **IP Routed Subnet**
- Added new feature of DHCP Option Optimization & **Option 43 Service List**
- Added new feature of **Triple Play**
- Added new feature of **Bandwidth Limit**
- Added new feature of **WireGuard®**
- Added new feature of **mDNS Bonjour**
- Added new feature of **Cloud/Manager Connection Diagnostics**
- Added support of Transferring APs to GWN Cloud/Manager
- Added support of disabling/enabling Ethernet port
- Added support of Facebook/Twitter/Google authentication for Captive Portal
- Added support of 1 month data local store for GWN7003
- Added support of displaying associated Wi-Fi clients' information from managed APs
- Added support of exporting client/access point/guest list
- Added support of VPN cert backup and restore
- Added support of scheduling for SSID bandwidth limit and policy routing
- Added support of filtering clients by VLAN ID
- Added support of more Cloud Features: Portal, VPN, Policy Routing, Modifying web Password, Certification management, WAN Health, WAN VLAN Priority.
- Optimized the IP binding configurations
- Optimized the Alert settings and added more Alert events
- Removed DST for Mexico time zone
- More bug fixes

NEW FEATURE OVERVIEW

- **IGMP**

Support IGMP proxy and IGMP snooping settings.



IGMP

General Settings | IGMP Multicast Group Table

IGMP Proxy

IGMP Proxy Once enabled, IGMP proxy are allowed to access any multicast group

*Interface

IGMP Version

Query Interval (secs) Default 125, range 1-1800

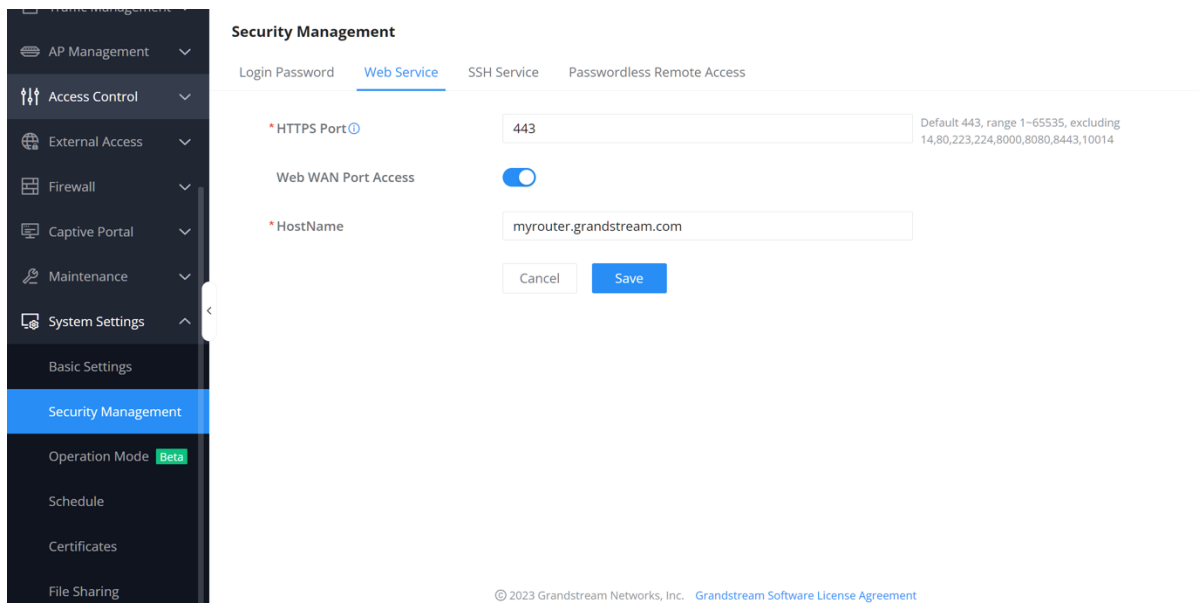
IGMP Snooping

IGMP Snooping Once enabled, multicast traffic will be forwarded to the port belonging to the multicast group member. This configuration will be applied to all LAN ports

© 2023 Grandstream Networks, Inc. [Grandstream Software License Agreement](#)

- **HostName Access**

This will allow local users to use configured hostname to access router web portal.



Security Management

Login Password | **Web Service** | SSH Service | Passwordless Remote Access

*HTTPS Port Default 443, range 1-65535, excluding 14,80,223,224,8000,8080,8443,10014

Web WAN Port Access

*HostName

© 2023 Grandstream Networks, Inc. [Grandstream Software License Agreement](#)

- **IP Routed Subnet**

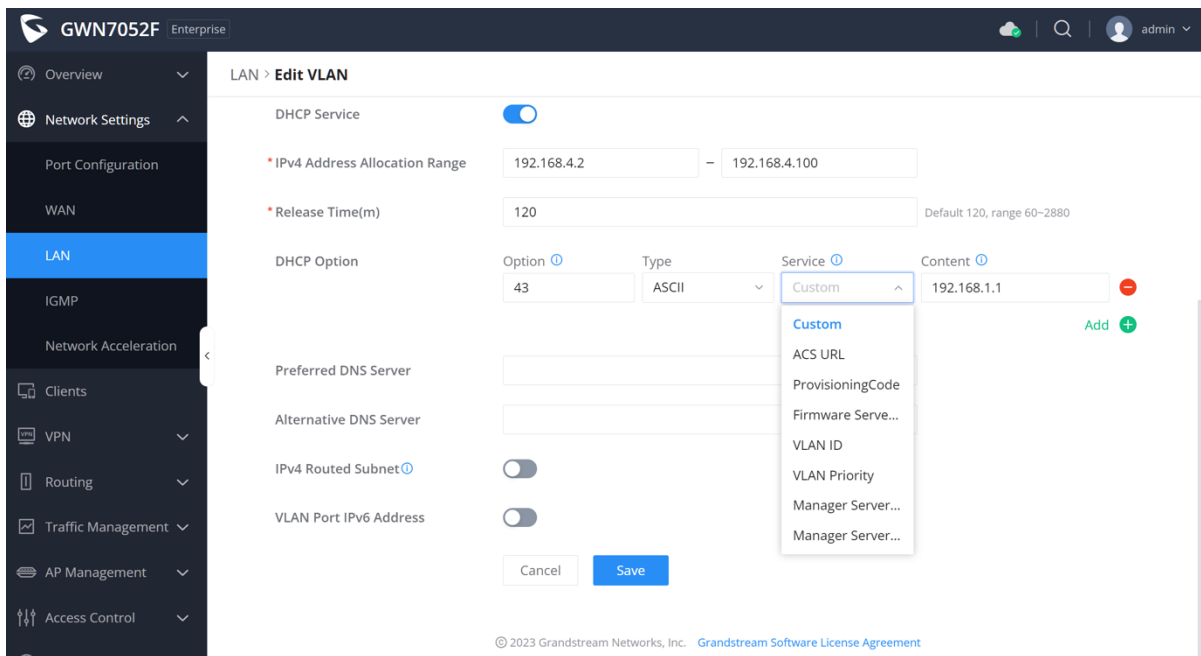
Configuration is available to LAN settings, Once enabled, clients will be allowed to access WAN without NAT.

Once enabled, clients under the VLAN will be allowed to access the Internet using their IP addresses.

IPv4 Routed Subnet

* Interface

- DHCP Option Optimization & Option 43 Service List**



GWN7052F Enterprise | admin

LAN > Edit VLAN

DHCP Service

* IPv4 Address Allocation Range: -

* Release Time(m): (Default 120, range 60-2880)

Option	Type	Service	Content
43	ASCII	Custom	192.168.1.1

Preferred DNS Server:

Alternative DNS Server:

IPv4 Routed Subnet

VLAN Port IPv6 Address

© 2023 Grandstream Networks, Inc. [Grandstream Software License Agreement](#)

- Triple Play**

Configuration is available at Network Settings → WAN → Edit WAN

Bridge Mode

*VLAN Tag ID/Port/Priority

VLAN Tag ID	Port	Priority
<input type="text" value="Enter VLAN Tag ID"/>	<input type="text" value="Choose Port"/>	<input type="text" value="0"/>

- Bandwidth Limit**

GWN7062 Enterprise | admin

Bandwidth Limit > Add Bandwidth Limit

*Name 1-64 characters

Status

Constraint Range

*IP Address/Mask Length / Add +

Maximum Upload Bandwidth Kbps The range is 1-1024, if it is empty, there is no limit

Maximum Download Bandwidth Kbps The range is 1-1024, if it is empty, there is no limit

Bandwidth Schedule

© 2023 Grandstream Networks, Inc. [Grandstream Software License Agreement](#)

- **WireGuard®**

GWN7052F Enterprise | admin

WireGuard® | Peers

Saved successfully

<input type="checkbox"/>	Name	Status	Ports	WireGuard® Address	Uptime	Upload	Download	Operations
<input type="checkbox"/>	WG_Server	<input checked="" type="checkbox"/>	WAN1 (WAN)		0s	↑ 0B	↓	<input type="button" value="Edit"/> <input type="button" value="Refresh"/> <input type="button" value="Delete"/>

© 2023 Grandstream Networks, Inc. [Grandstream Software License Agreement](#)

- **mDNS Bonjour**

The screenshot shows the configuration page for the Bonjour Gateway on a Grandstream GWN7052F Enterprise device. The interface includes a left-hand navigation menu with options like Overview, Network Settings, Port Configuration, WAN, LAN (selected), IGMP, Network Acceleration, Clients, VPN, Routing, Traffic Management, AP Management, and Access Control. The main content area is titled 'LAN' and has sub-tabs for VLAN, VLAN Port Settings, Static IP Binding, Local DNS Records, and Bonjour Gateway. The Bonjour Gateway toggle is turned on. Below it, there are fields for 'VLAN' (set to 'All VLANs') and 'Service'. A dropdown menu for 'Service' is open, showing a list of services with checkboxes: Any, AirPlay, AirPrint, chromeCast, FTP, HTTP, iChat, Samba, and SSH. At the bottom, there is a copyright notice: © 2023 Grandstream Networks, Inc. Grandstream Software License Agreement.

- **Cloud/Manager Connection Diagnostics**

The screenshot shows the 'System Diagnostics' page for a Grandstream GWN7003 Enterprise device. The left-hand navigation menu includes Overview, Network Settings, Clients, VPN, Routing, Traffic Management, AP Management, Access Control, External Access, Firewall, Captive Portal, Maintenance, TR-069, SNMP, Backup & Restore, System Diagnostics (selected), Upgrade, Alerts & Notifications, and System Settings. The main content area is titled 'System Diagnostics' and has sub-tabs for Ping / Traceroute, Core File, Capture, External Syslog, ARP Cache Table, Link Tracing Table, Network Diagnostics, PoE Diagnostics, and Cloud/Manager Connection Diagnostics. A status bar indicates 'Connection Platform: Cloud' and 'Connection Status: Connected'. Below this, the 'Connection Detection' section shows a 'Redetect' button and a vertical list of phases, each with a checkmark: Preparation Phase, Domain Name Resolution Phase, TCP Connection Phase, TLS Connection Phase, HTTP(S) Transaction Phase, and WS(S) Upgrade Phase. A 'Log' section at the bottom has 'Get Log' and 'Export' buttons. At the bottom, there is a copyright notice: © 2023 Grandstream Networks, Inc. Grandstream Software License Agreement.

FIRMWARE VERSION 1.0.3.5

PRODUCT NAME

GWN7001 / GWN7002 / GWN7003

DATE

09/19/2023

FIRMWARE FILE INFORMATION

- GWN7001/GWN7002/GWN7003 Firmware file name: gwn700xfw.bin
MD5 checksum: 36d3d232f90d44661dc82ff9bd5b3e8c

CHANGES/ENHANCEMENT

- Fixed an issue caused by loopback packet detection mechanism.

FIRMWARE VERSION 1.0.3.4

PRODUCT NAME

GWN7001 / GWN7002 / GWN7003

DATE

08/08/2023

FIRMWARE FILE INFORMATION

- GWN7001/GWN7002/GWN7003 Firmware file name: gwn700xfw.bin
MD5 checksum: c7a4c56847c718e8ee6dcefc6e782dd6

CHANGES/ENHANCEMENT

- Added new feature of TURN server
- Added new feature of 2.5G SFP module support
- Optimized VPN packet forwarding
- Optimized QoS UI
- Internal bug fixes

FIRMWARE VERSION 1.0.1.6

PRODUCT NAME

GWN7001 / GWN7002 / GWN7003

DATE

06/13/2023

FIRMWARE FILE INFORMATION

- GWN7001/GWN7002/GWN7003 Firmware file name: gwn700xfw.bin
MD5 checksum: 85e10887561ea8540af9e083d8f7f460

CHANGES/ENHANCEMENT

- This is the first release of GWN700X